



ROKMASTER RESOURCES CORP.

TSX.V: RKR OTCQB: RKMSF FSE: 1RR1



Nechako Project

Targeting large porphyry Cu-Au-Mo systems

www.rokmaster.com

February 2026

Cautionary Statement

This presentation contains “forward-looking information” within the meaning of applicable Canadian securities regulations and “forward-looking statements” within the meaning of the United States Private Securities Litigation Reform Act of 1995 (collectively, “forward-looking information”). The forward-looking information contained in this presentation is made as of the date of this presentation. Except as required under applicable securities legislation, Rokmaster Resources Corp. (“RKR”) does not intend, and does not assume any obligation, to update this forward-looking information.

Forward-looking information includes, but is not limited to, statements with respect to the potential for expansion, new discoveries and future cash flows; future price of minerals and the effects thereof; the estimation of mineralization; the timing and amount of estimated capital expenditures; costs and timing of proposed activities; plans and budgets for and expected results of exploration activities; permitting time-lines; requirements for additional capital; government regulation of mining operations; environmental risks; reclamation obligations and expenses; title disputes or claims, adequacy of insurance coverage, the availability of qualified labour, acquisition plans and strategies, the payment of dividends in the future, and RKR’s use of the proceeds of an Offering. Often, but not always, forward-looking information can be identified by the use of words such as “plans”, “expects”, “is expected”, “budget”, “scheduled”, “estimates”, “forecasts”, “intends”, “anticipates”, or “believes” or the negatives thereof or variations of such words and phrases or statements that certain actions, events or results “may”, “could”, “would”, “might” or “will” be taken, occur or be achieved.

This forward-looking information is based on certain assumptions that RKR believes are reasonable, including that the current price of and demand for minerals being targeted by RKR will be sustained or will improve, the supply of minerals targeted by RKR will remain stable, that RKR’s current exploration programs and objectives can be achieved, that general business and economic conditions will not change in a material adverse manner, that financing will be available if and when needed on reasonable terms and that RKR will not experience any material accident, labour dispute, or failure of plant or equipment.

While RKR considers these assumptions to be reasonable based on information currently available to it, they may prove to be incorrect. Forward-looking information involves known and unknown risks, uncertainties and other factors which may cause the actual results, performance or achievements of RKR to be materially different from any future results, performance or achievements expressed or implied by the forward-looking information. Such factors include, among others, the risk that actual results of exploration activities will be different than anticipated, the cost of labour, equipment or materials increase more than expected, that the future price of minerals targeted by RKR will decline, that changes in project parameters as plans continue to be refined may result in increased costs, that plant, equipment or processes will fail to operate as anticipated, that accidents, labour disputes and other risks generally associated with mining may occur and that unanticipated delays in obtaining governmental approvals or financing or in the completion of development or construction activities may occur. Although RKR has attempted to identify important factors that could cause actual actions, events or results to differ materially from those described in forward-looking information, there may be other factors that cause actions, events or results not to be as anticipated, estimated or intended. There can be no assurance that forward-looking information will prove to be accurate, as actual results and future events could differ materially from those anticipated in such statements. Readers are cautioned not to place undue reliance on forward-looking information due to the inherent uncertainty thereof.

The Team

John Mirko	President, CEO & Director
Michael (“Mike”) Cowin	Chairman & Director
Adam Pankratz, MBA, MA	Director
Michael Malana	CFO and Corporate Secretary
Connor Malek	VP of Exploration
Eric Titley, P.Geo	Geological Consultant
James (“Jim”) Oliver, Ph.D., P. Geo.	Geological Consultant
Mark Rebagliati Ted Muraro	Geological Advisors
Harvey Tremblay	Drilling and Business Advisor
Stacy Freudigmann, P. Eng.	Metallurgical Advisor

Share Structure

Share Information:

Issued and Outstanding	180,490,478
Warrants	5,000,000
Stock Options	7,225,000

Share Ownership:

- Insiders, family & close associates ~ 34%
- DELPHI Unternehmensberatung AG ~ 14%

Trading Symbols:

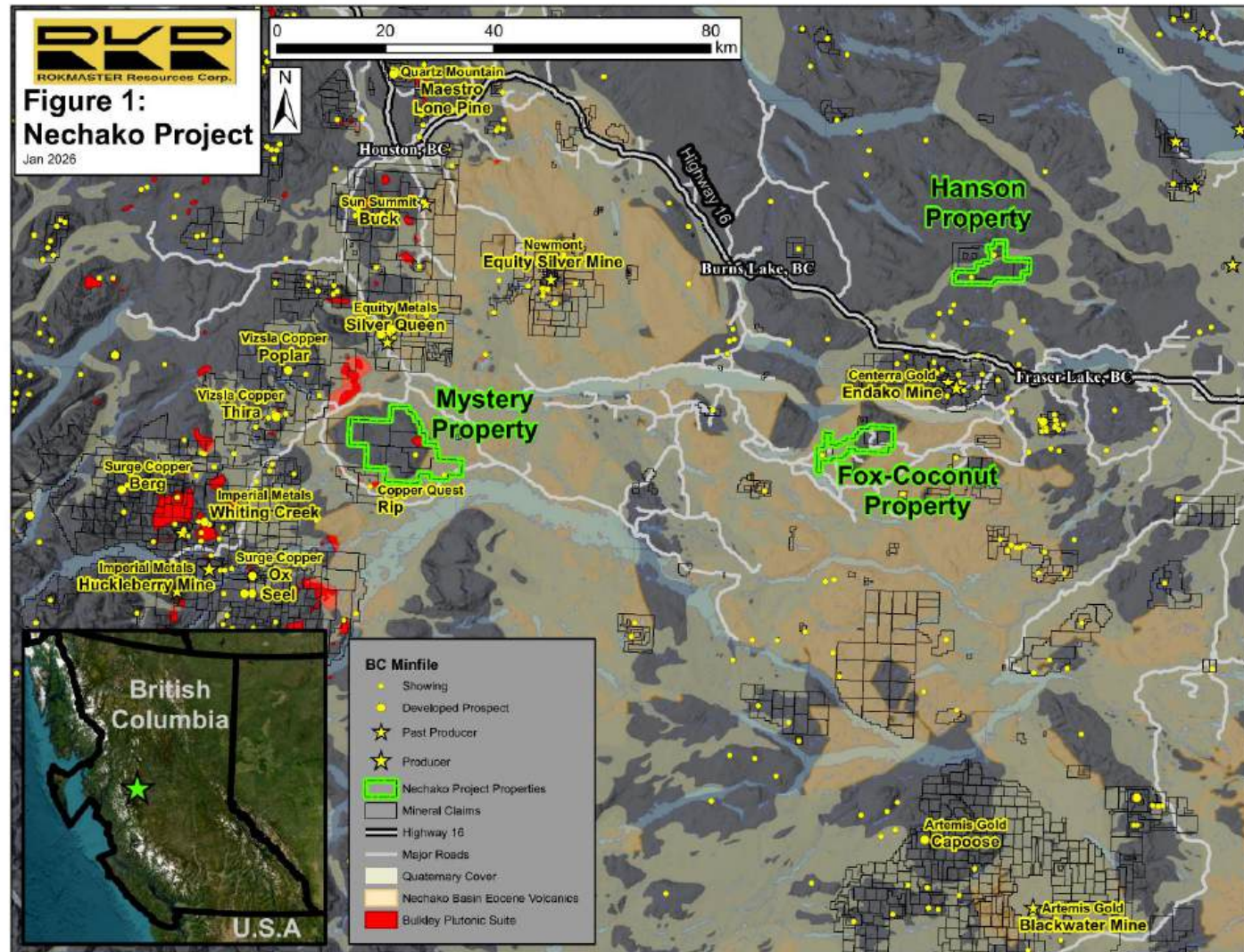
RKR (TSX.V)
RKMSF (OTCQB)
1RR1 (Frankfurt)

Contact:

Email: info@rokmaster.com
Phone: +1 (604) 290-4647

Nechako Project

- Central Nechako section of the prolific Stikine terrane
- Three road-accessible Properties
- Friendly option agreements to acquire 100%
- Permits approved for drilling on all properties



Northern Nechako Region: An excellent neighborhood

Past producing deposits include:

- Endako (Centerra Gold)
- Huckleberry (Imperial Metals)
- Equity Silver (Newmont)

Active exploration and development projects include:

- Blackwater Mine (Artemis Gold)
- Berg, Ox, and Seel deposits (Surge Copper)
- Poplar-Thira Project (Vizsla Copper)

The region hosts excellent infrastructure and exploration potential.

Endako Mo Mine In Production for ~50 years



Aerial view of Endako Mine
2007 Thompson Creek Metals Annual Report

Huckleberry Cu-Mo-Au-Ag Mine Produced >1.0 Blbs copper 1997-2016



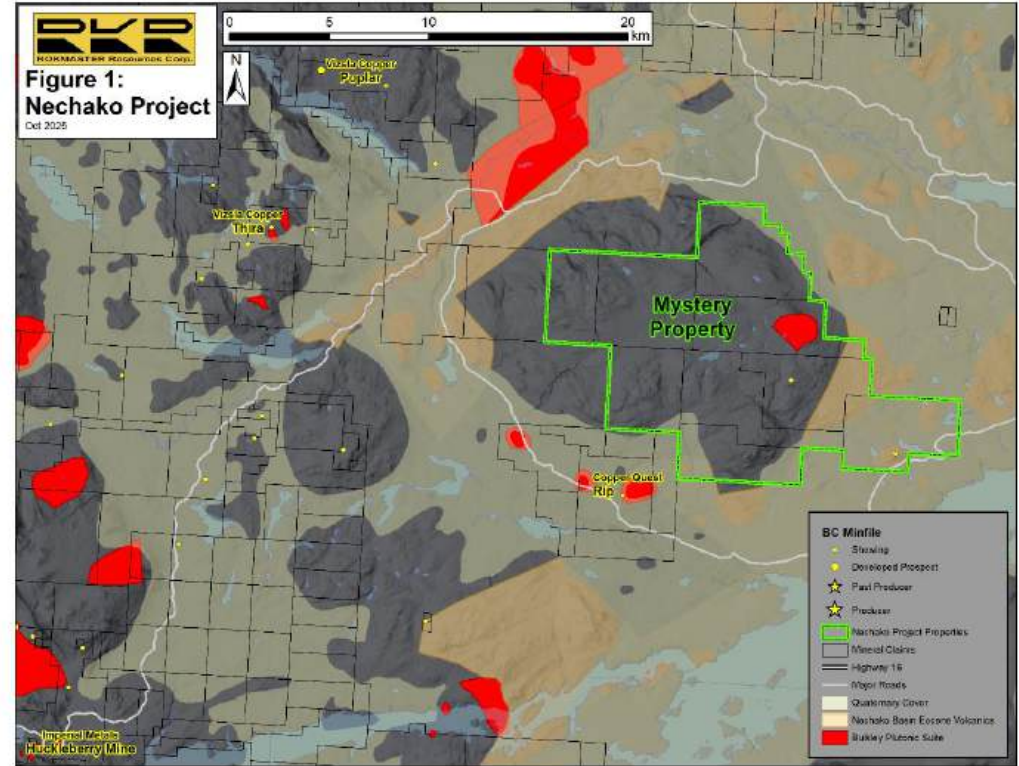
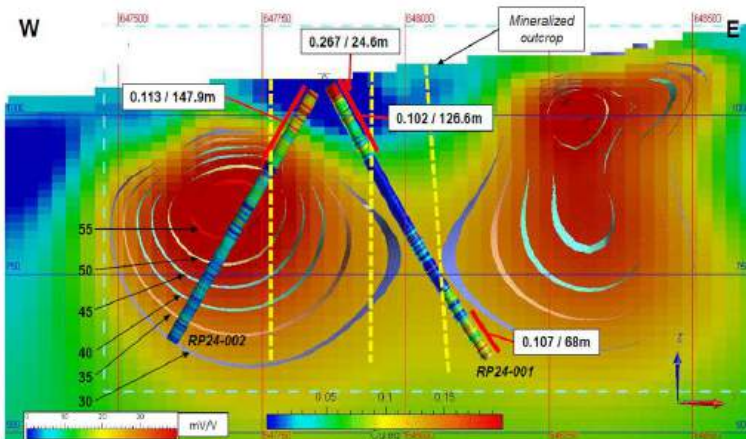
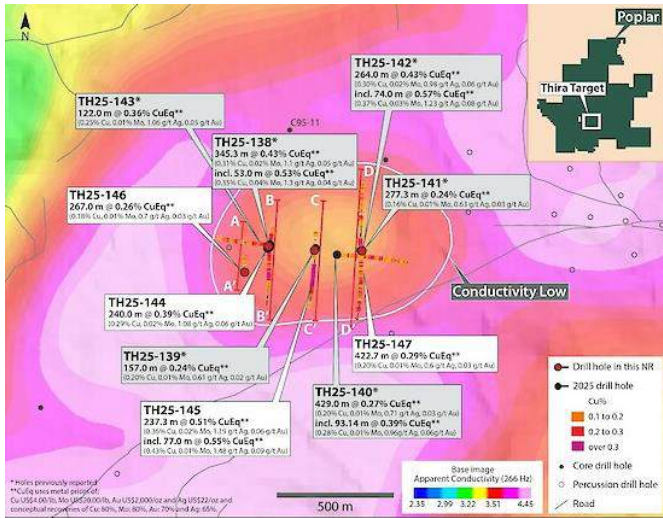
Thomas, S. 2014 The Northern View

Blackwater Au-Ag Mine In production targeting 320,000 oz Au/yr

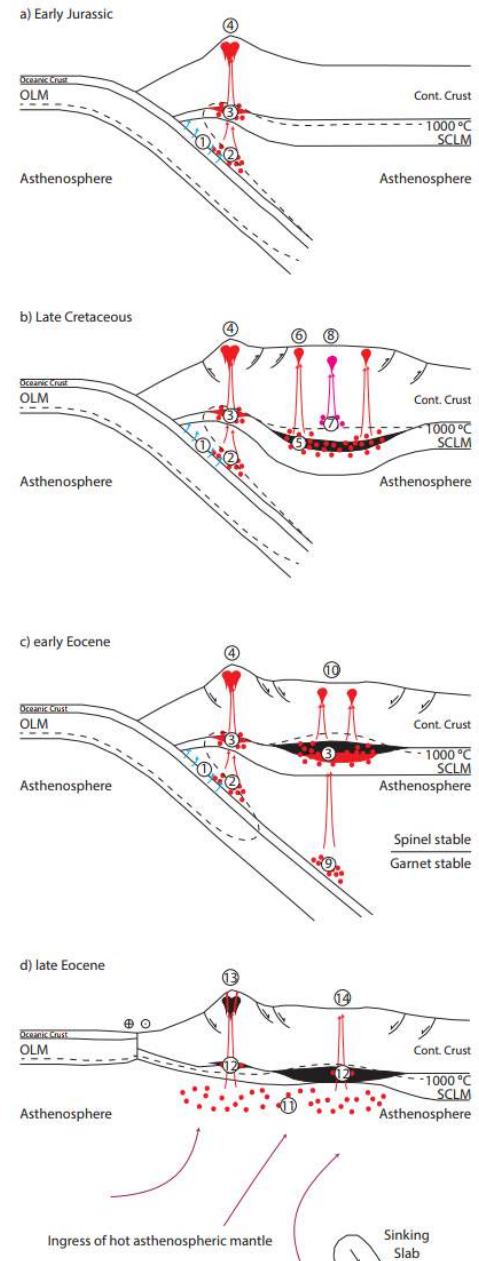
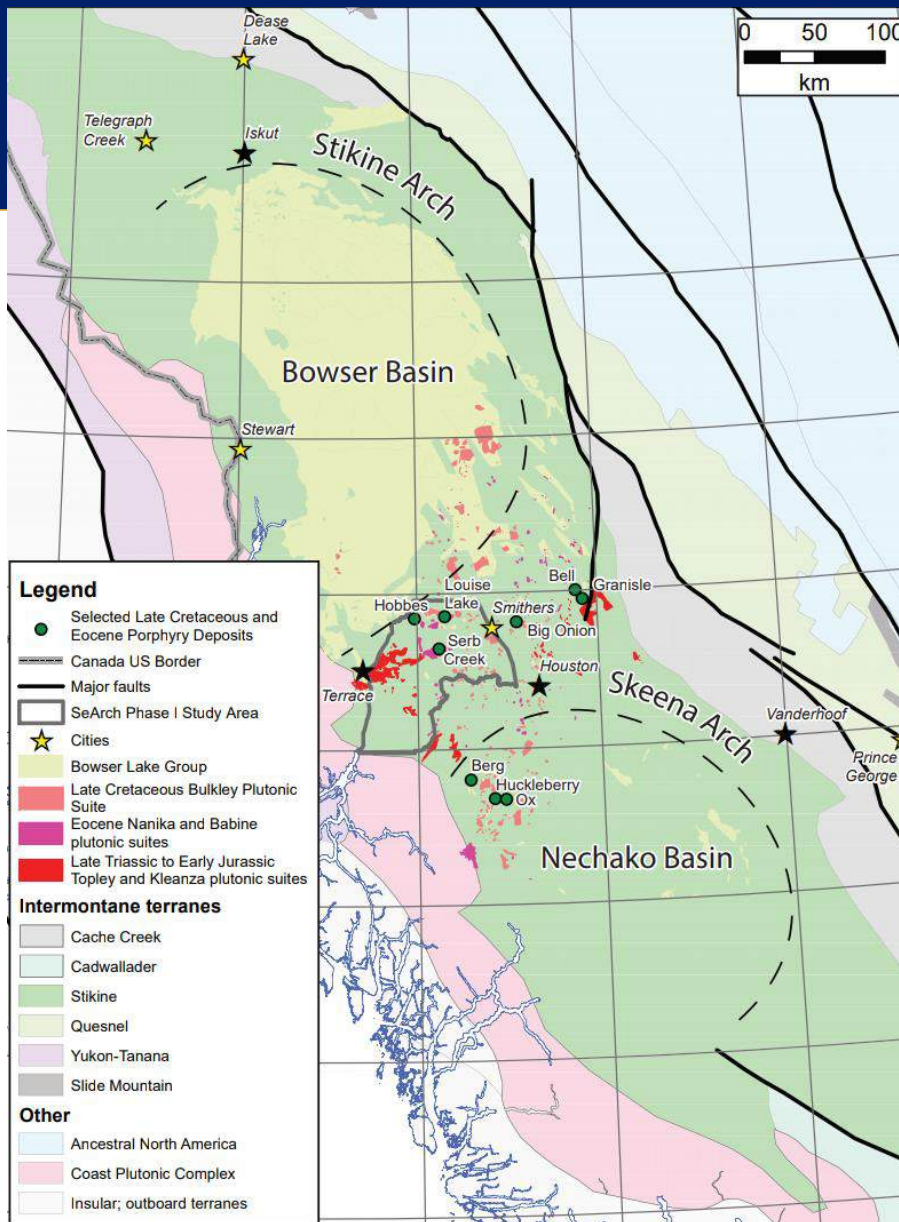


Artemis Gold April 24, 2024 news release

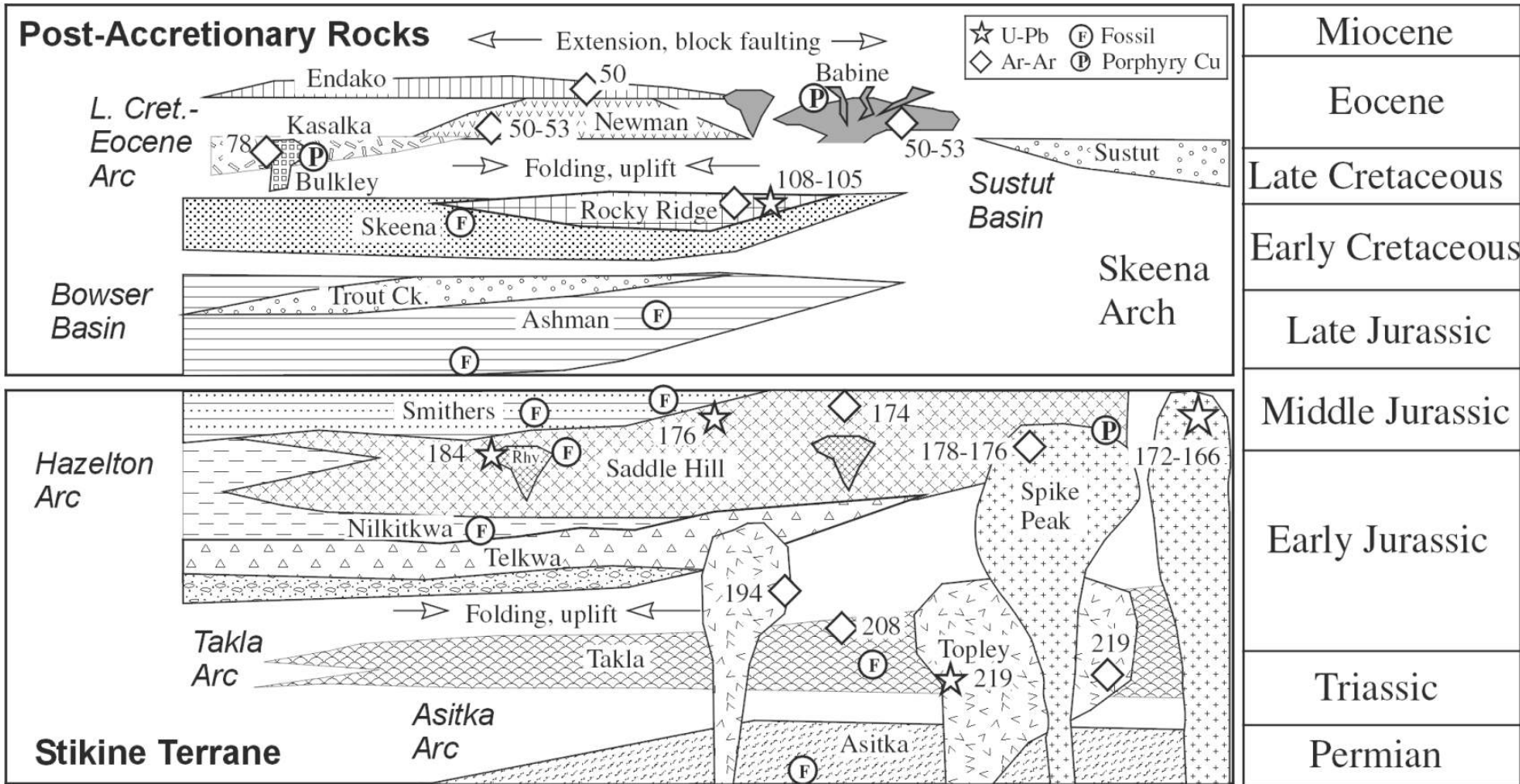
Mystery Property – Neighbors



Stikinia



Multiple ages of mineralization



Late Cretaceous Nechako Basin

An excellent time

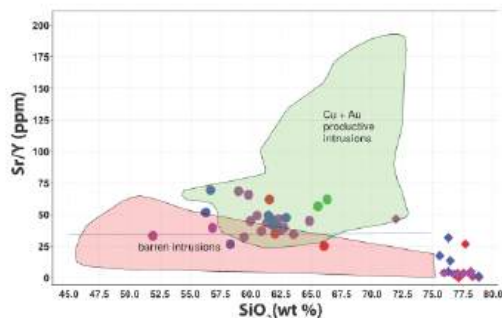


Figure 3.11: SiO_2 vs. Sr/Y plot, after Loucks (2014). The ratio of Sr/Y is used to assess melt fertility in copper porphyry systems. Higher Sr/Y values (>35 wt%), noted by the horizontal blue line) are associated with calc-alkalic intermediate to felsic rocks. They present a signature that may be produced from fractional crystallization of basaltic arc magmas where continuous fractional crystallization is occurring and accumulates hydrated residual melt (Loucks, 2014). The relationship of Late Cretaceous-hosted mineralization in central BC to epithermal and porphyry systems allows for this plot to be used to assess potential mineral fertility for the Kasalka Group volcanics.

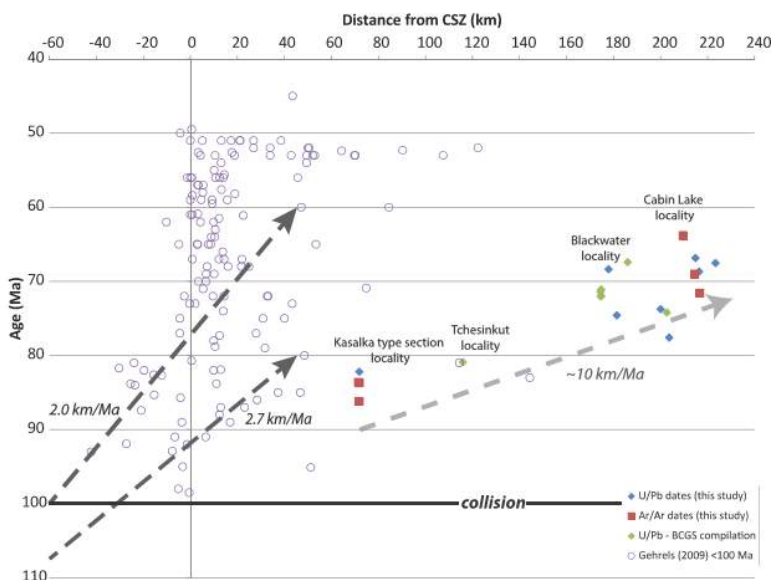
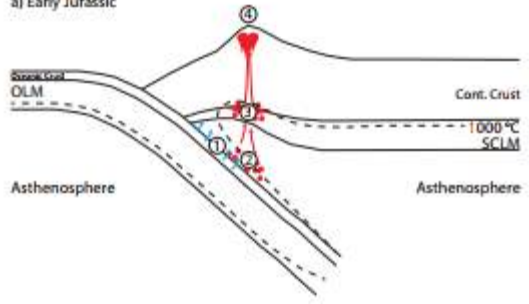


Figure 5.3: Schematic cross section of possible tectonic and magmatic configurations during Early Cretaceous, Late Cretaceous, and Early Eocene in the Nechako Plateau: a) Late Jurassic-Early Cretaceous; typical arc subduction and arc magmatism interaction between oceanic crust and continental crust, (b) Late Cretaceous; continued arc magmatism along subduction margin and crustal thickening behind the arc. Onset of melting of subduction-modified lithosphere behind the arc can be initiated with the change in thermal equilibrium boundaries beneath thickened continental crust, and c) Early Eocene; continued arc magmatism along present-day Coast Plutonic Complex. Figure modified from Angen et al. (2018); Richards (2009).

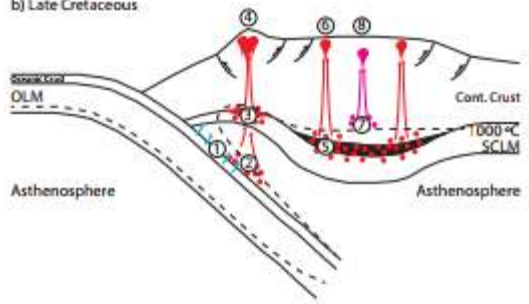
Eocene Nechako Basin

Also an excellent time

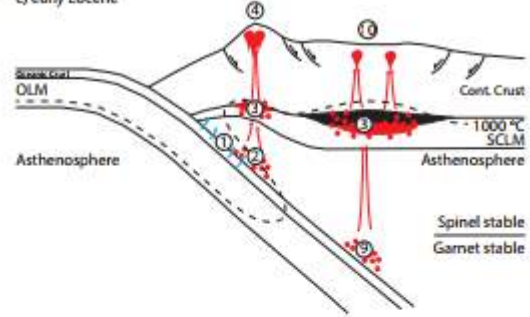
a) Early Jurassic



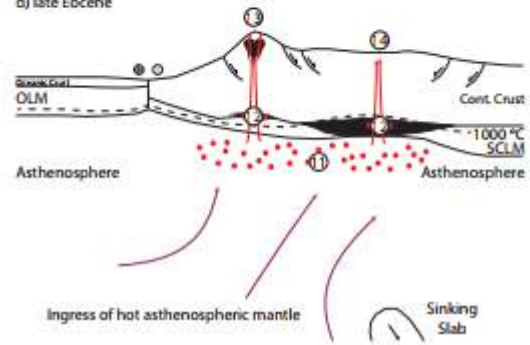
b) Late Cretaceous



c) early Eocene



d) late Eocene

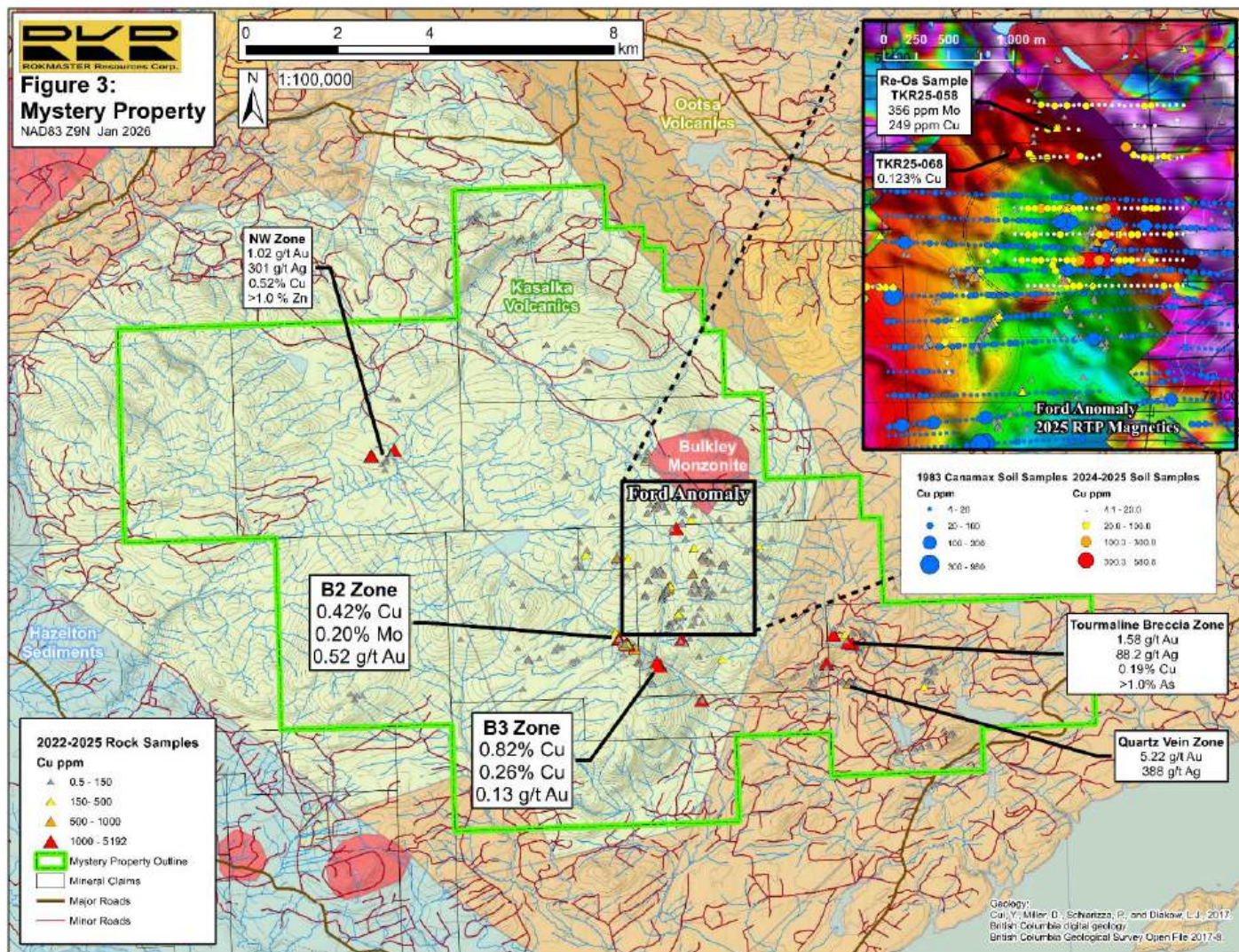


Nechako Basin 2018-2021 Fires – Great Access and Exposure



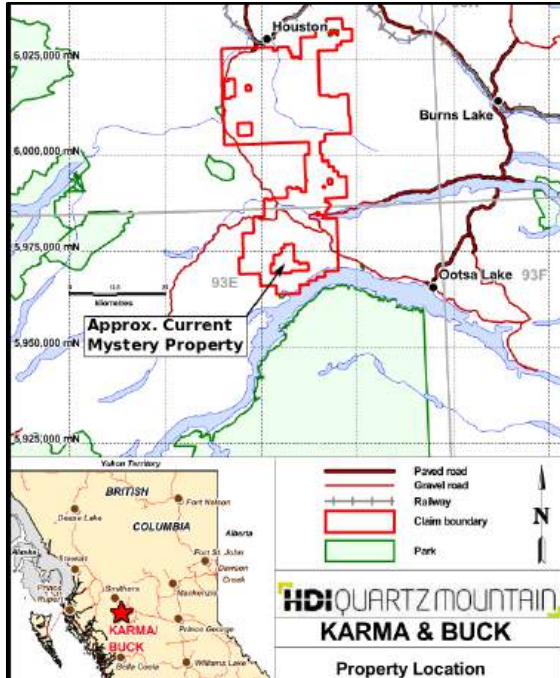
Mystery Property – 16,291 hectares

- Cretaceous Kasalka Group volcanic rocks intruded by a stock of porphyritic monzonite belonging to the Late Cretaceous Bulkley Plutonic Suite. The Bulkley Plutonic Suite hosts porphyry Cu-Mo mineralization at the nearby Huckleberry, Ox, and Seel deposits.
- Historic soil geochemical anomalies for copper, lead, zinc, silver associated with a coincident magnetic high.
- B2 Zone hosts potassic-altered andesite with extensive pyrite-chalcopyrite veining over ~200 m.



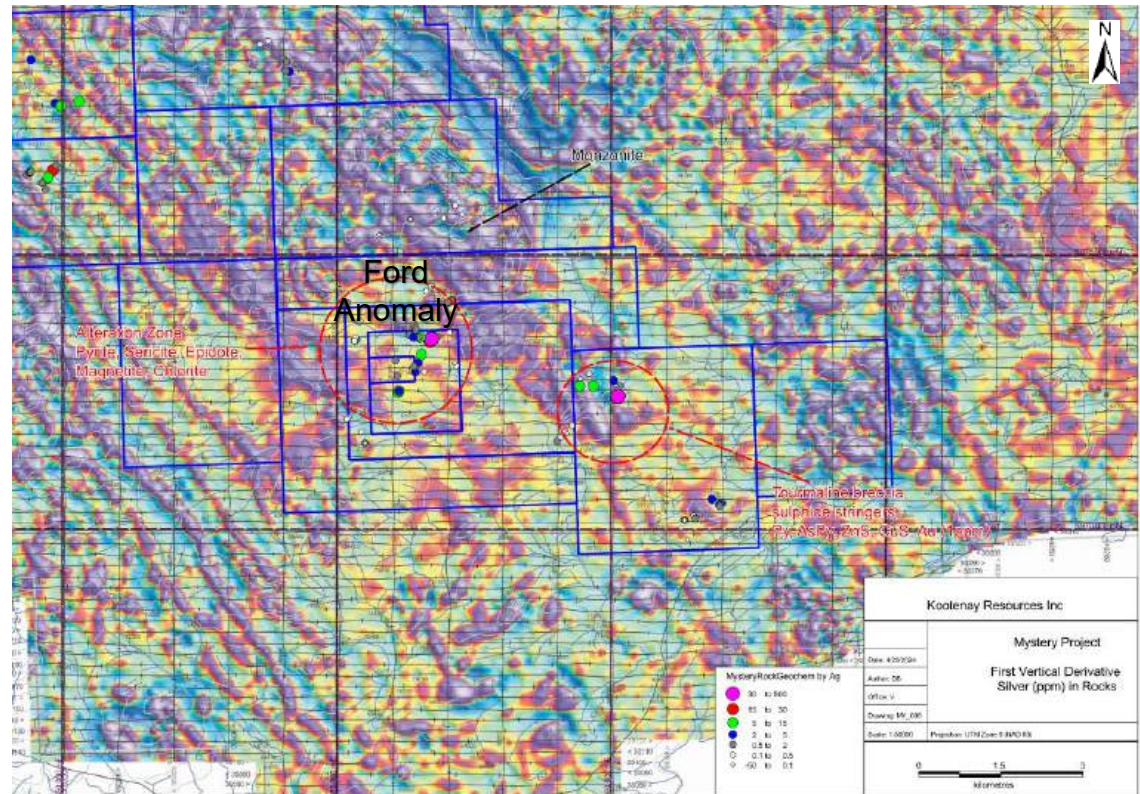
Mystery Property – Now consolidated

2012 HDI magnetic survey



Previous operators did not hold a set of key claims over the Ford Anomaly which is now in the center of the Mystery Property

2022 prospecting results over 2012 magnetic survey



2017 Copper Mountain ZTEM Survey



Mystery Property

KENNCO EXPLORATIONS, (WESTERN) LIMITED

GEOCHEMICAL AND GEOPHYSICAL SURVEYS

ON THE

FORD GROUP

Omineca Mining Division,
British Columbia

12 miles west of Wistaria, B. C.

53° 53' N

126° 38' W

by

Charles S. Ney, P.Eng.

February 23, 1970

1983 Geochemical Assessment Report

TITLE	Ootsa Lake Property
AUTHOR	B. E. Goad
DATE	14 March 1984
COMMODITIES	Ag, Au (Pb, Zn, Cu)
LOCATION -Area	Central B.C. 55 km south of the town of Houston
-Mining Division	Omineca
-Co-ordinates	Latitude 53° 52' - 56' N Longitude 126° 32' - 44' W
-NTS	93E/15E

CANAMAX VANCOUVER OFFICE

ASSESSMENT REPORT
GEOLOGY AND GEOCHEMISTRY
SHELFORD HILLS PROPERTIES
HILLS 1, 2, SHEL 1, 3-6, 9, 10
Record numbers 8475-8481, 8483, 9014

OMINECA MINING DIVISION
N.T.S. 93 E/15E

Latitude: 53 deg 51.5-57.5'N
Longitude: 126 deg 33.5-44.5'W

Work Performed:
June 22, 1988 to June 21, 1989

NORANDA EXPLORATION COMPANY, LIMITED
(no personal liability)

Report By: Mark Liskowich
Field Geologist

Del Myers
Senior Project Geologist

Mystery Property – 2024-2025 Exploration

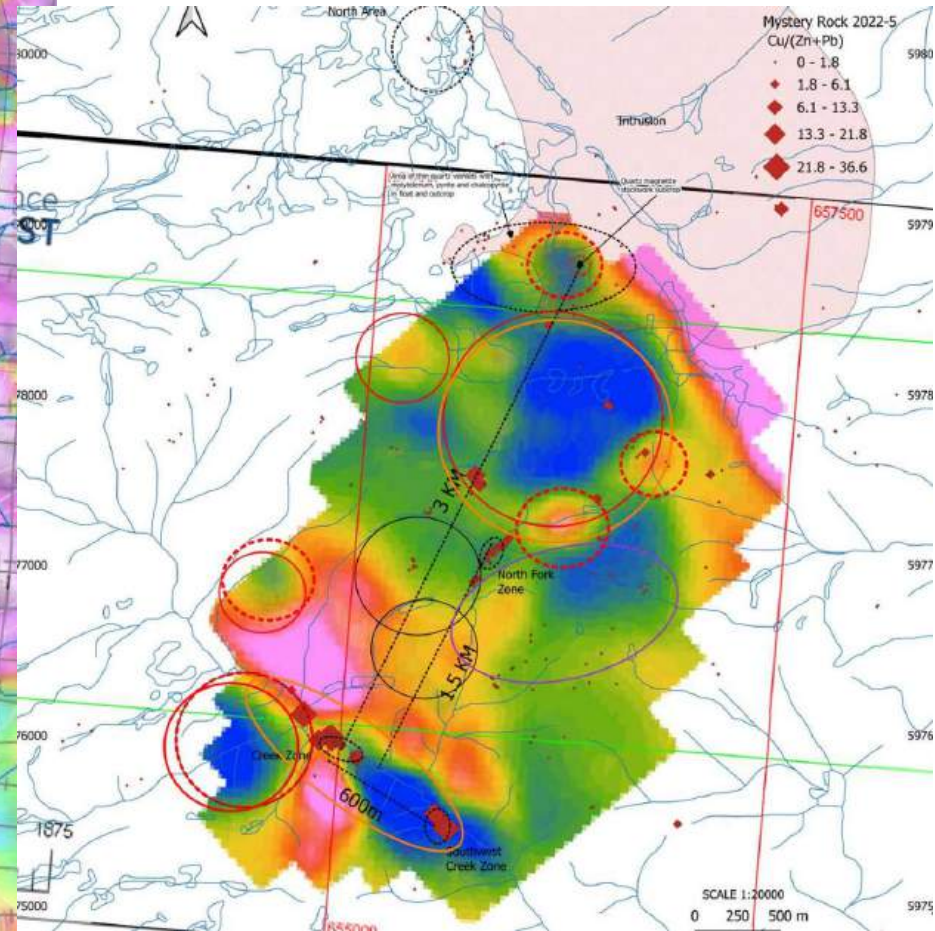
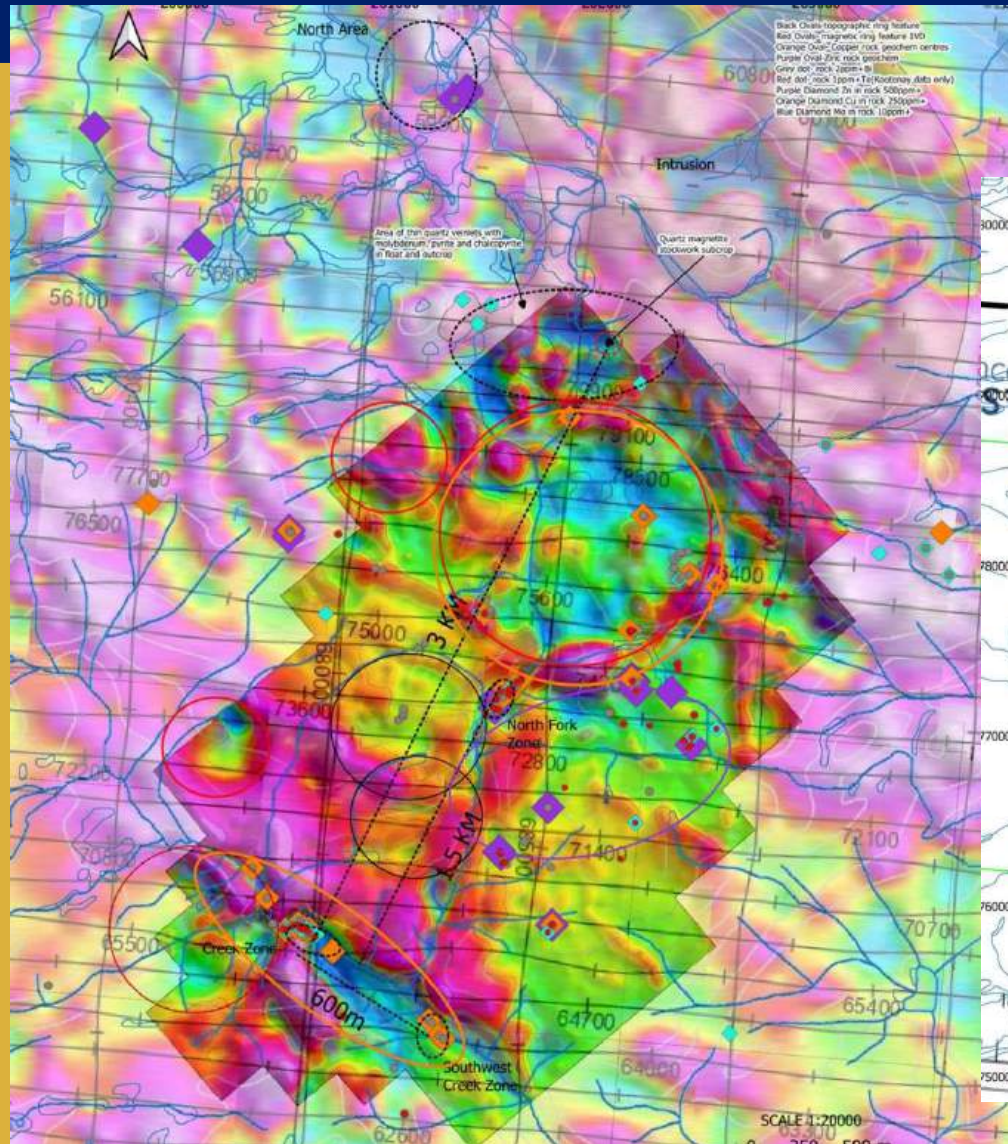
The Mystery Property was nearly entirely burned in a 2018 forest fire which now provides great exposure and new access with salvage logging operations.



2025 Field Work



Mystery Property



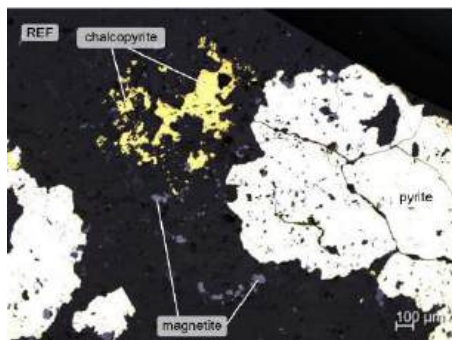
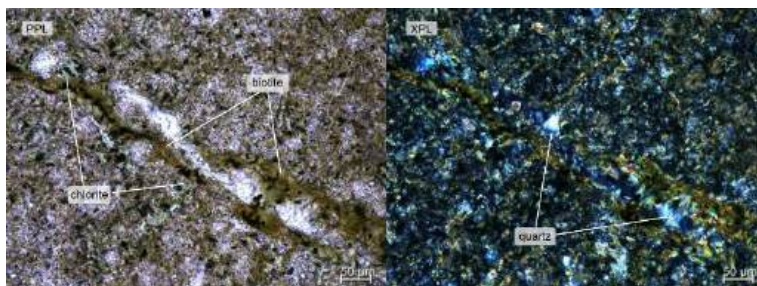
Mystery Property – 2024-2025 Exploration



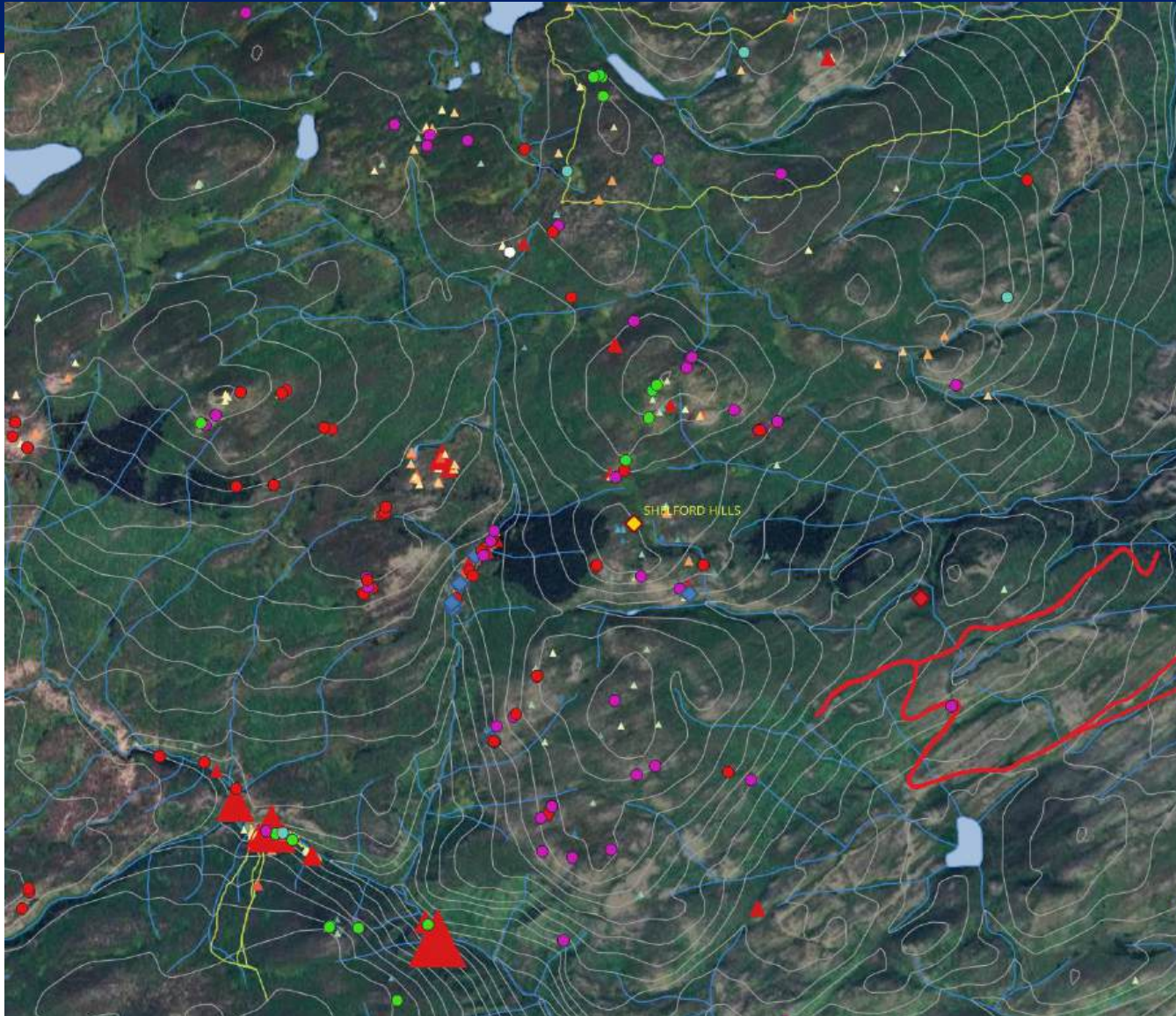
B2 Zone



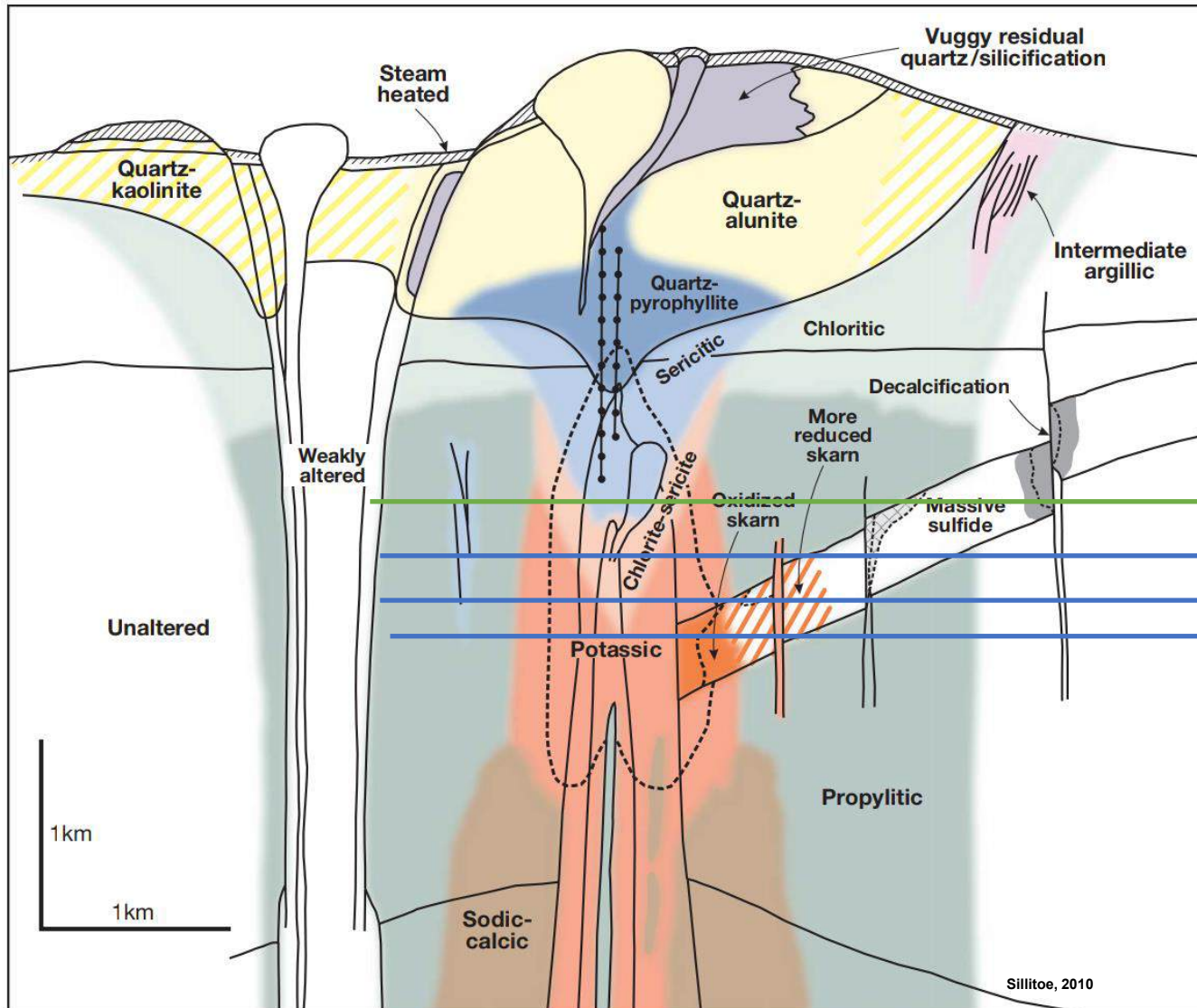
B3 Zone



Mystery Property



Mystery Property



Mystery 1,400 m – 1,200 m

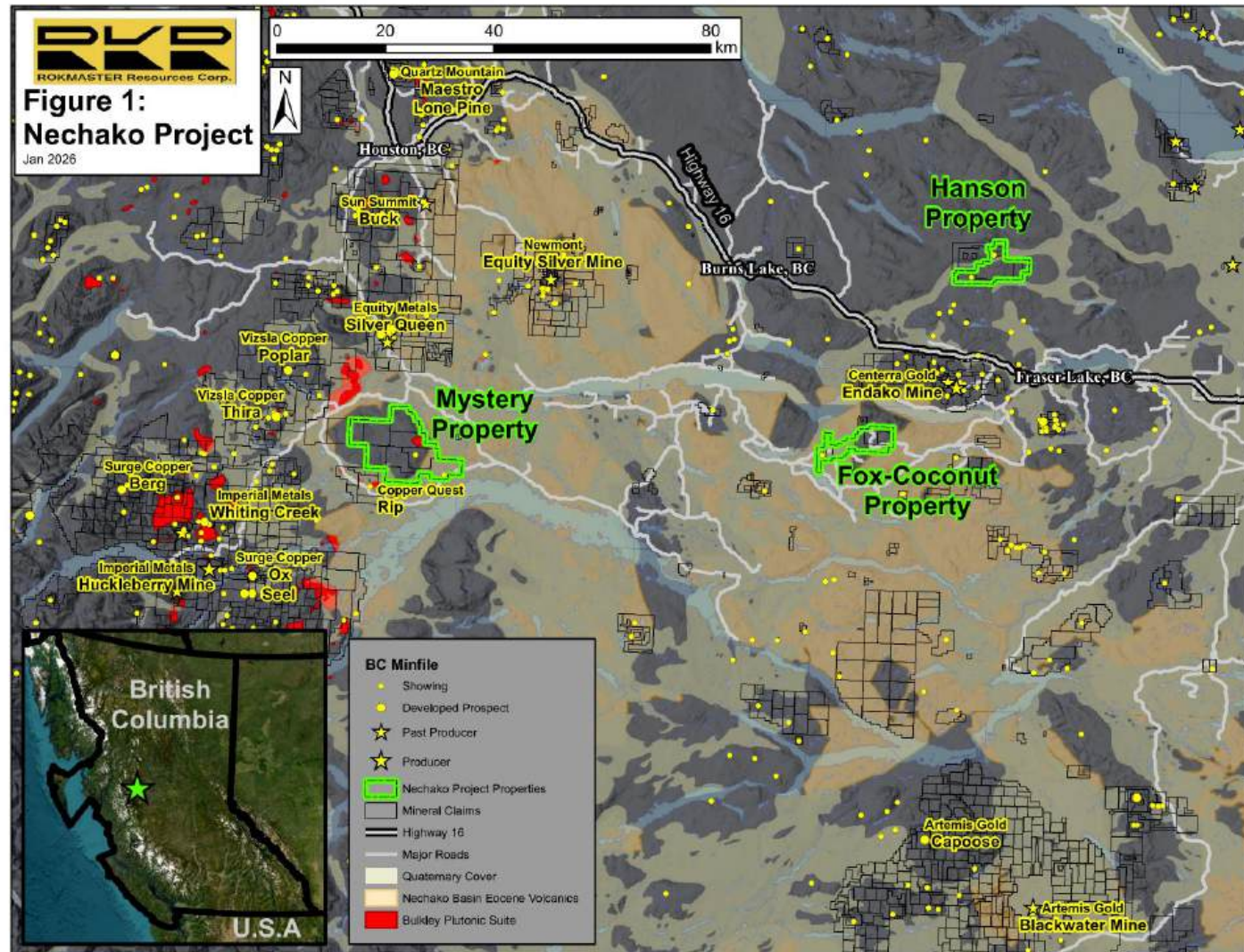
Rip+Thira-1,100 m ASL

HB+Ox+Seel-1,000 m ASL

Poplar-900 m ASL

Nechako Project

- Central Nechako section of the prolific Stikine terrane
- Three road-accessible Properties
- Friendly option agreements to acquire 100%
- Permits approved for drilling on all properties

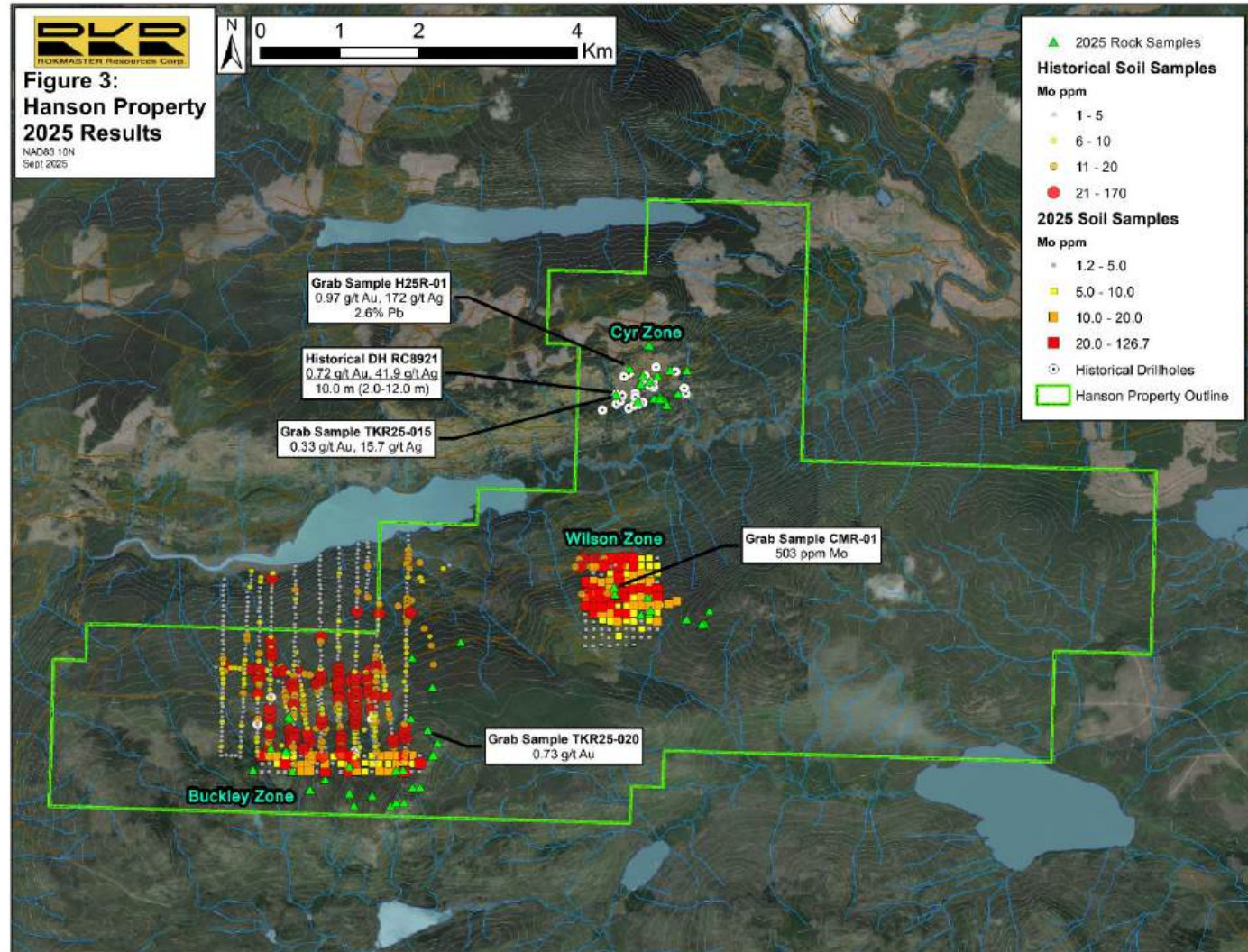


Hanson Property – 2025 Field Work

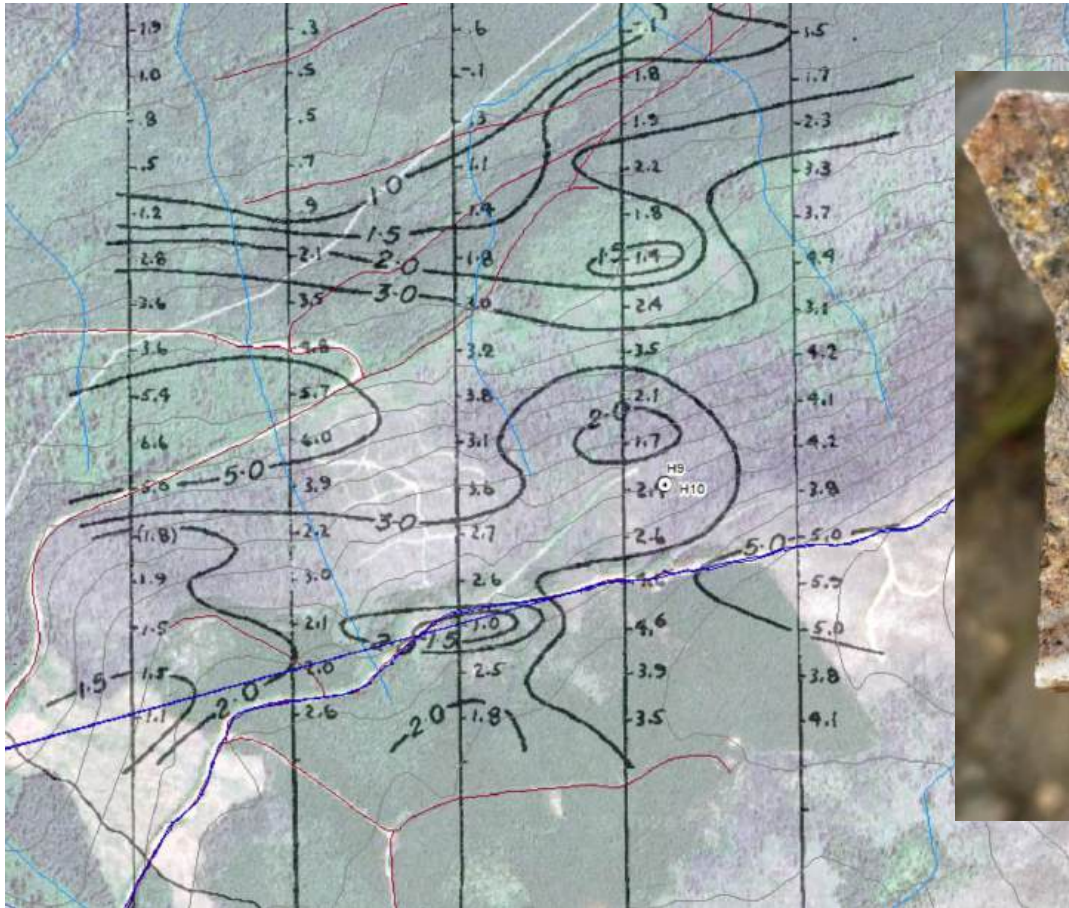
- Field work in 2025 extended the large soil anomalies at the Buckley and Wilson zones

- Identification of potassic (biotite) alteration directly related to the molybdenite mineralization at the Wilson Zone.

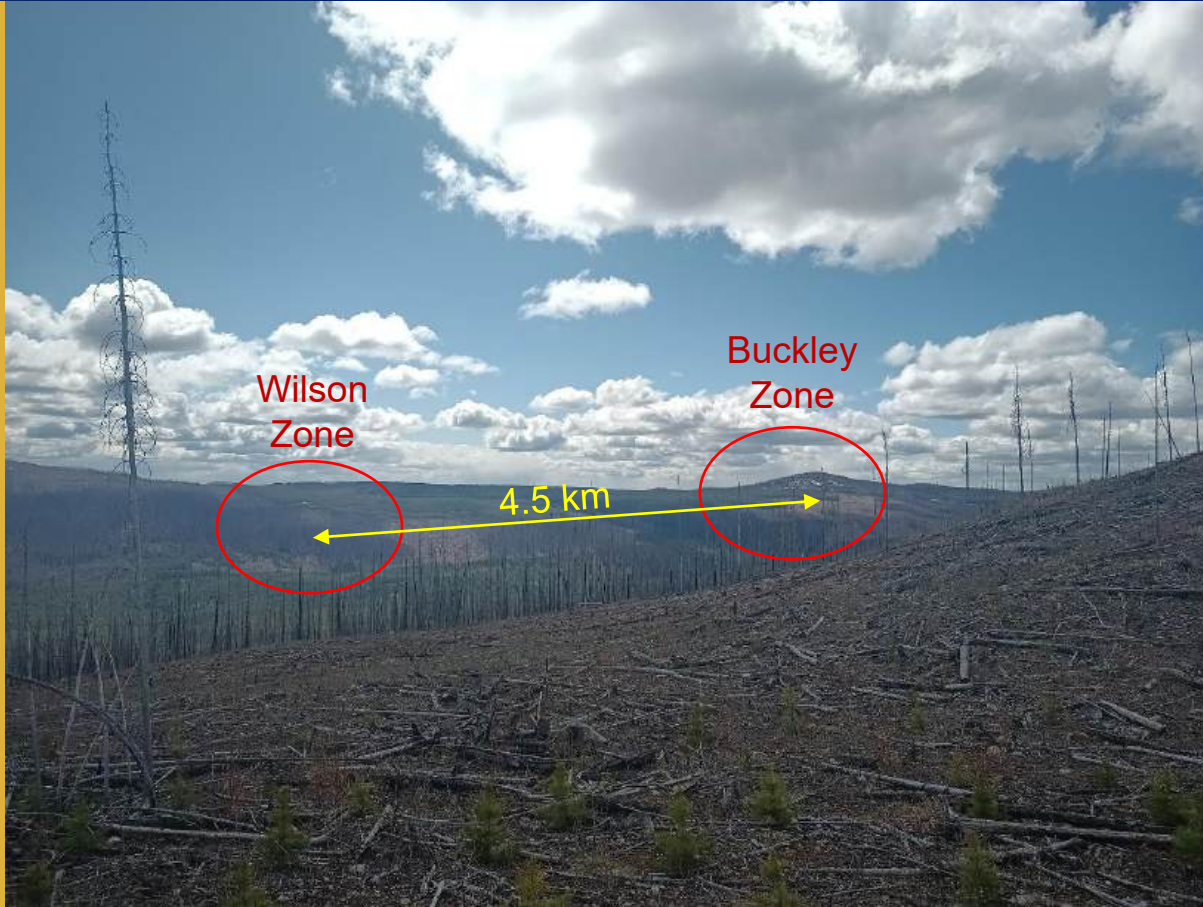
- An exploration drill permit has been applied for and the company anticipates approval soon.



Hanson Property – 2025 Field Work



Hanson Property – 2025 Photos



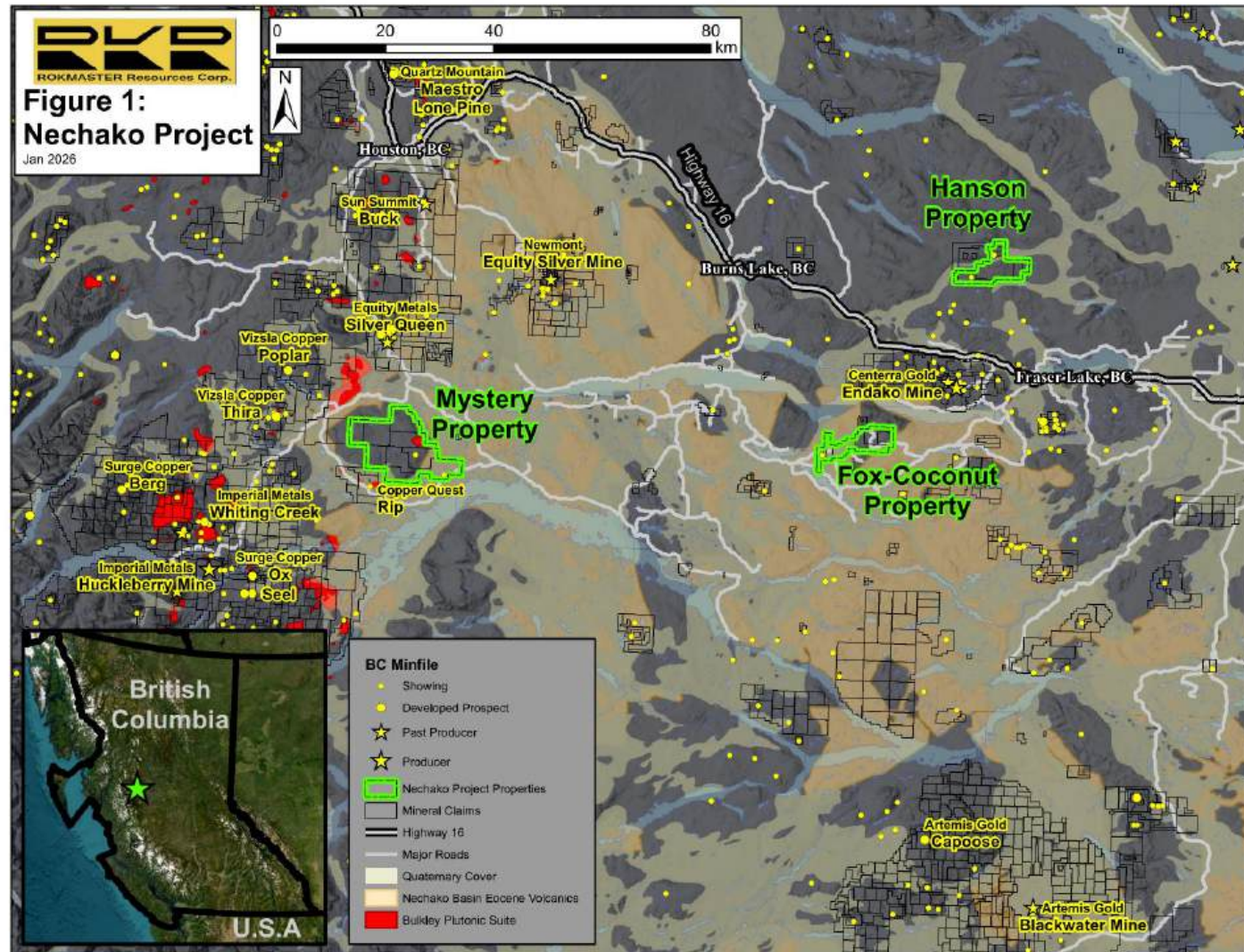
Looking South from Cyr Zone



Looking North from Wilson Zone

Nechako Project

- Central Nechako section of the prolific Stikine terrane
- Three road-accessible Properties
- Friendly option agreements to acquire 100%
- Permits approved for drilling on all properties

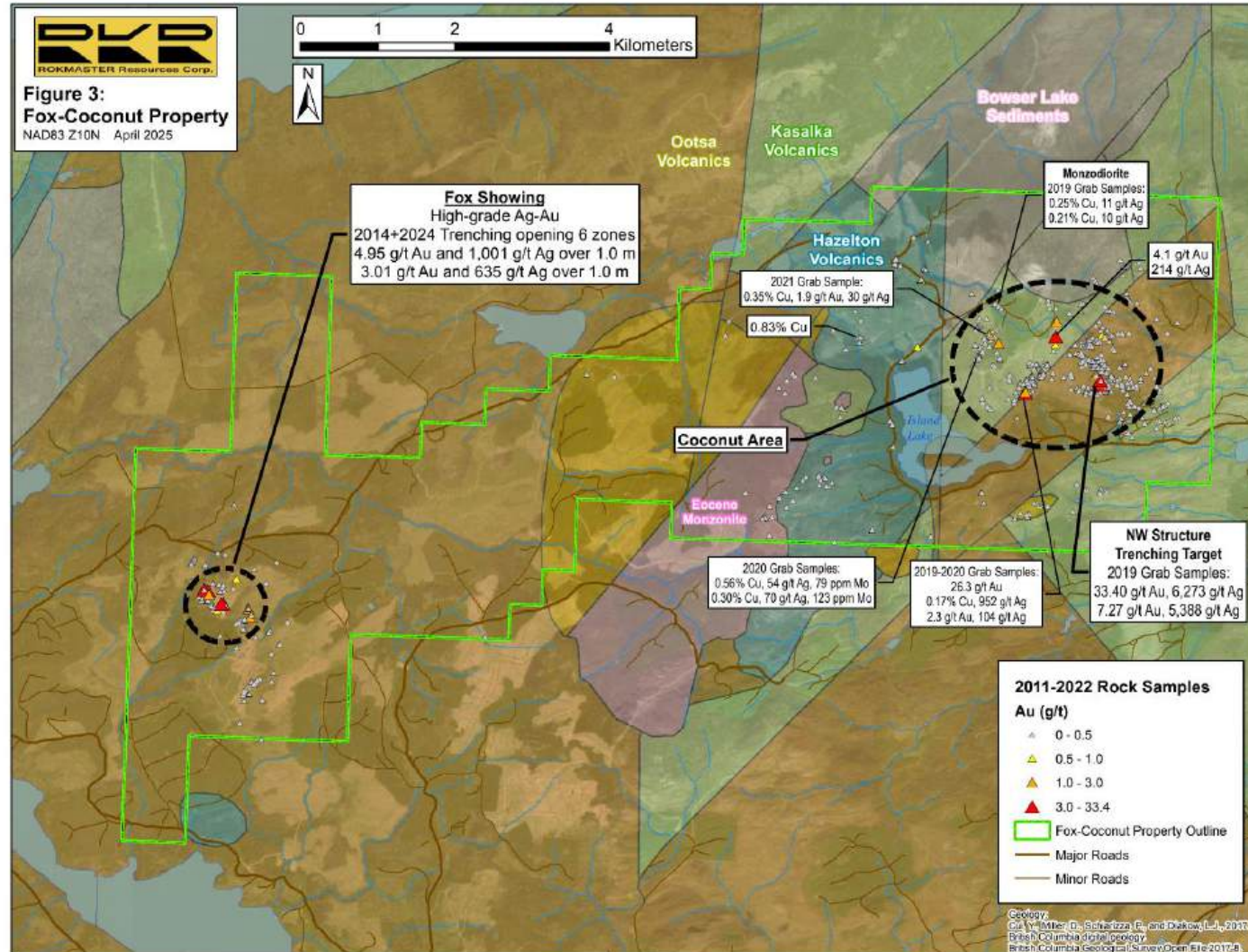


Fox-Coconut Property – 5,463 hectares

•Fox Showing:

Silicified rhyolite volcanics hosting quartz veins and breccias.

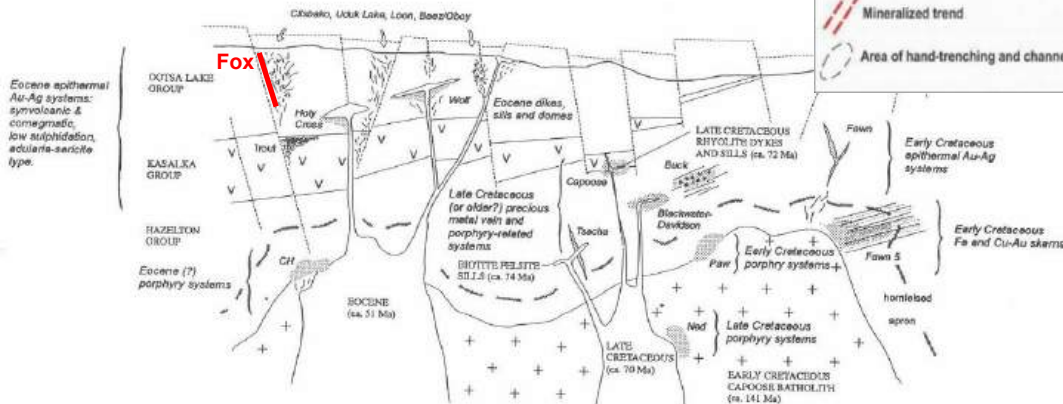
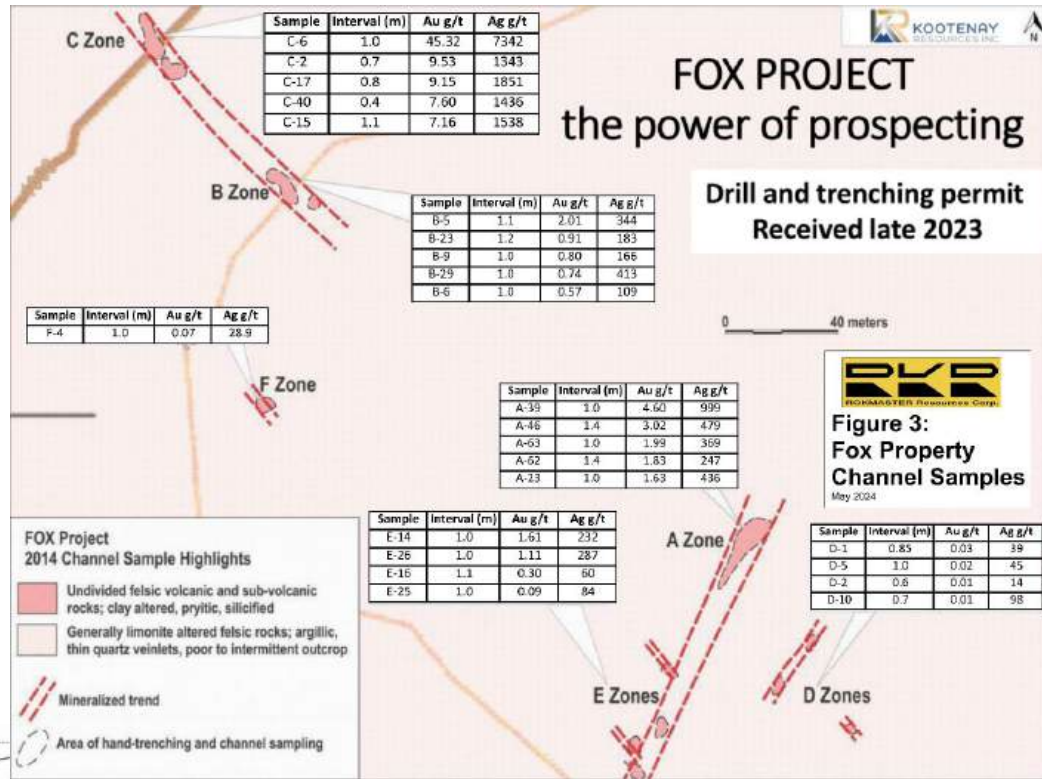
•**Coconut Area:** Broad zone of propylitic alteration which hosts several structurally controlled vein/dyke corridors with high-grade gold and silver and coincident base metals.



Fox Showing 2014 hand trenching and channel sampling

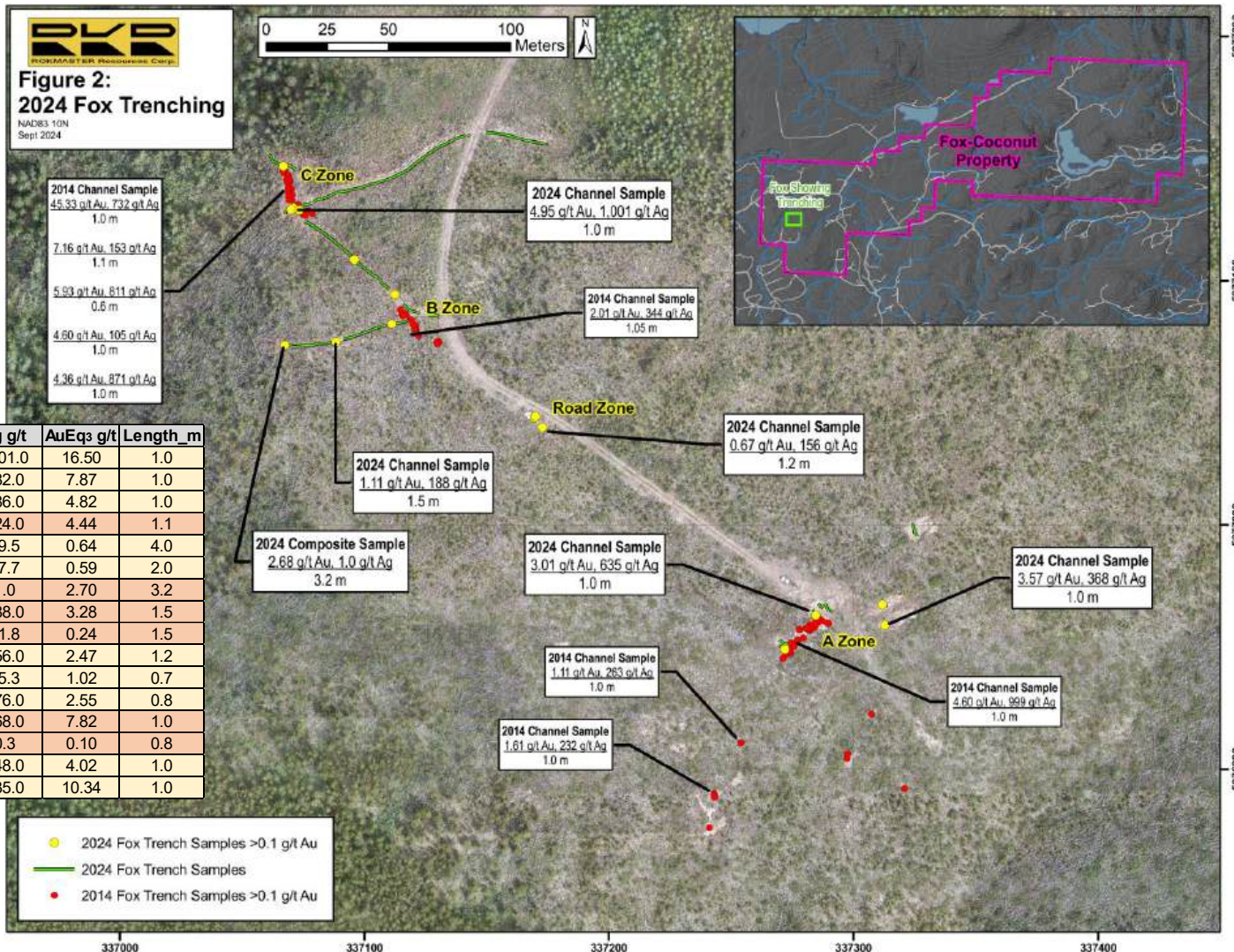


C Zone



Discovery Vein (C Zone): Average value of 6.5 g/t Au and 1,194 g/t Ag from 17 channel samples over average width of 0.9 meters

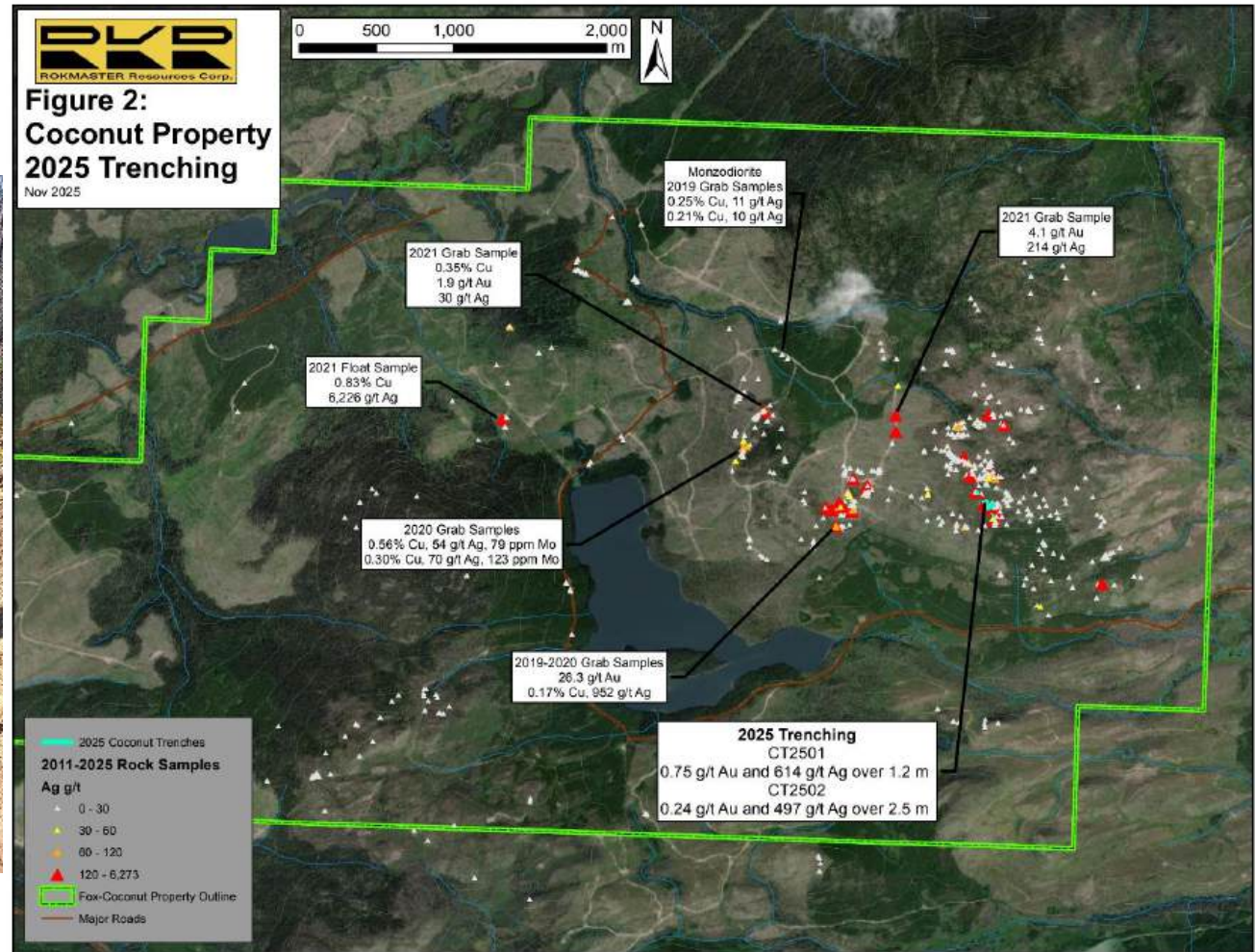
Fox Showing 2024 excavator trenching and channel sampling



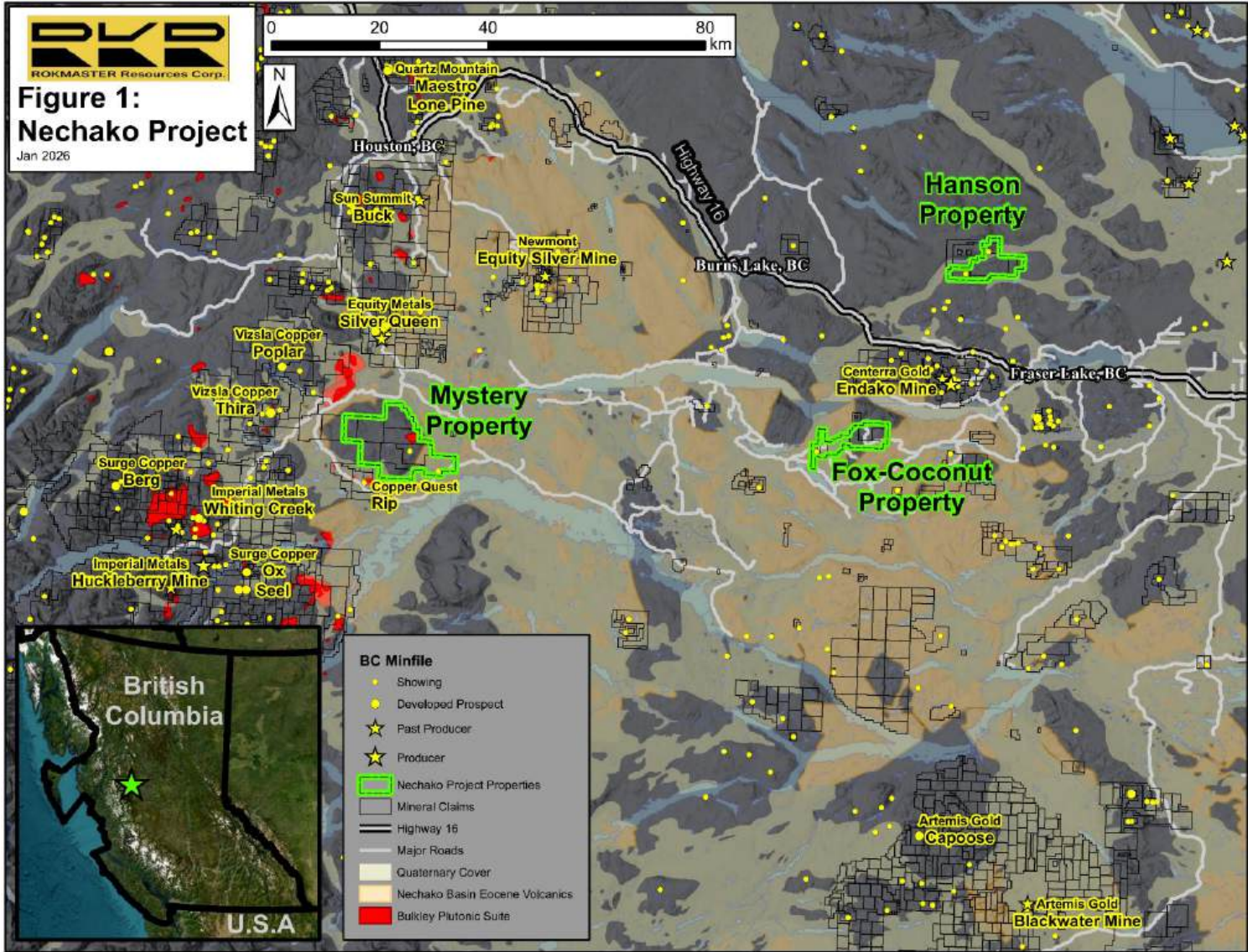
Rokmaster news release dated October 1, 2024

Coconut

2025 excavator trenching and channel sampling

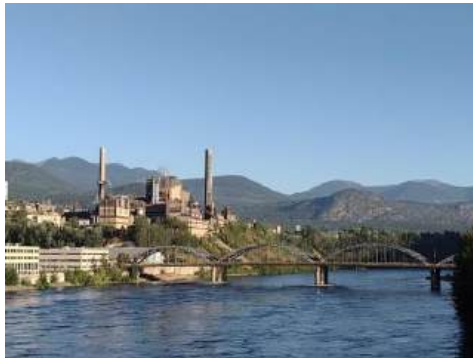


Nechako Project

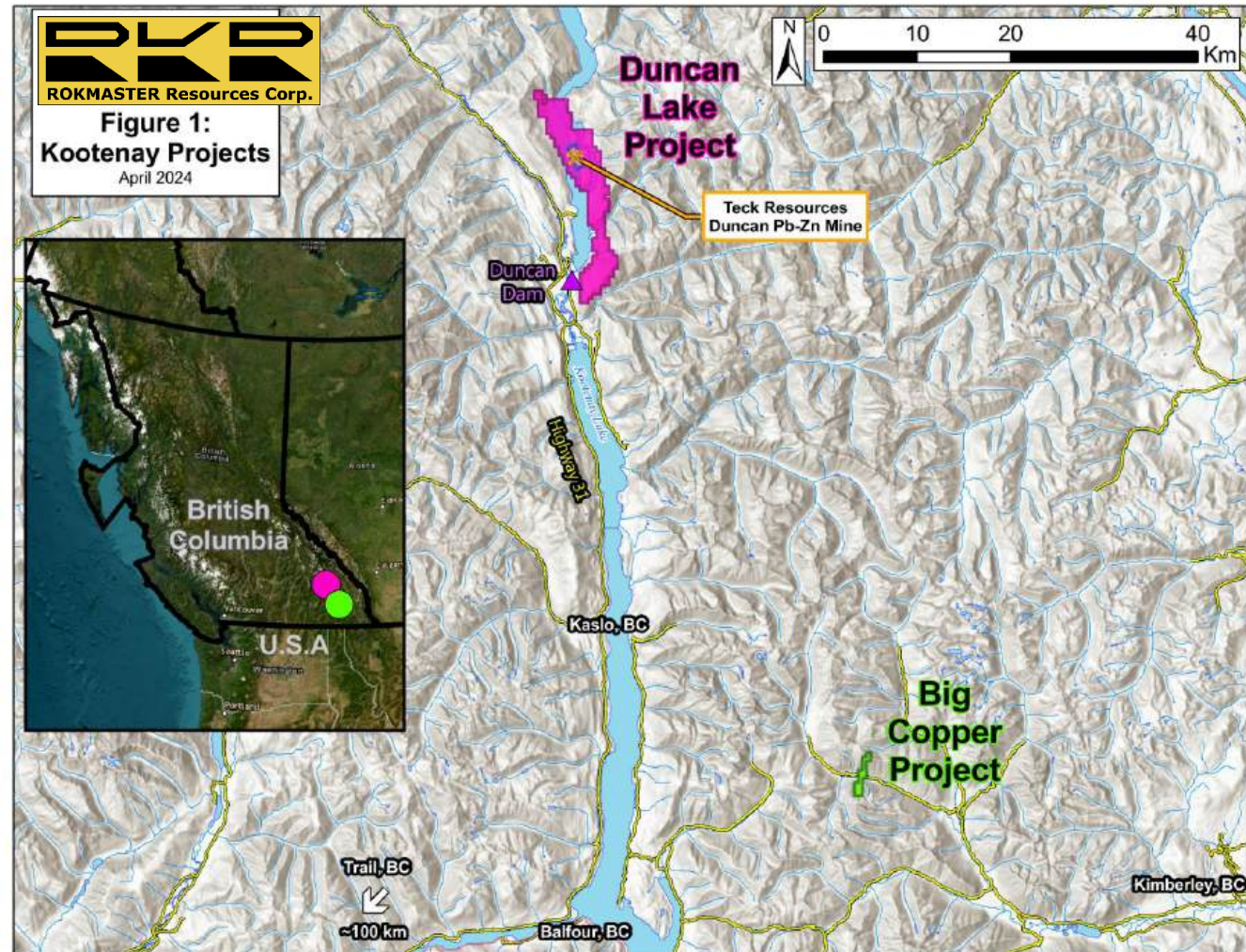


Duncan Lake and Big Copper Projects

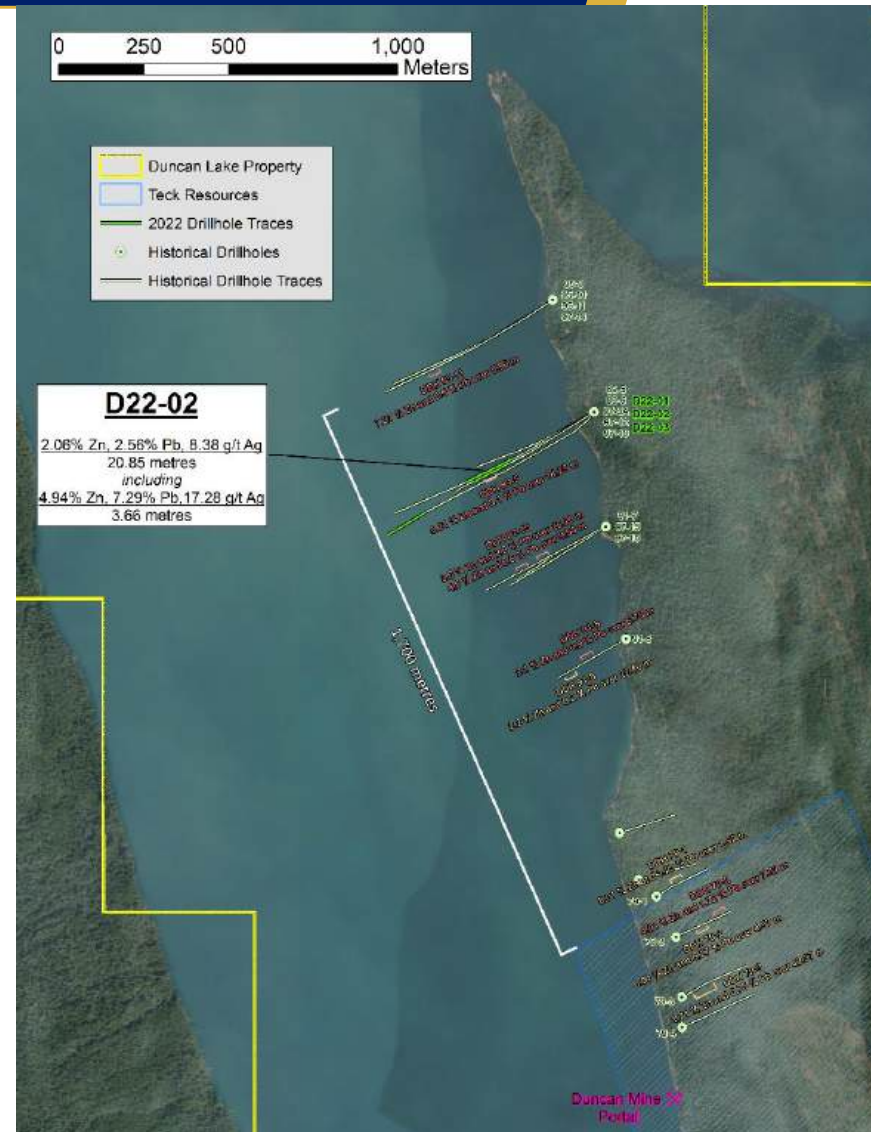
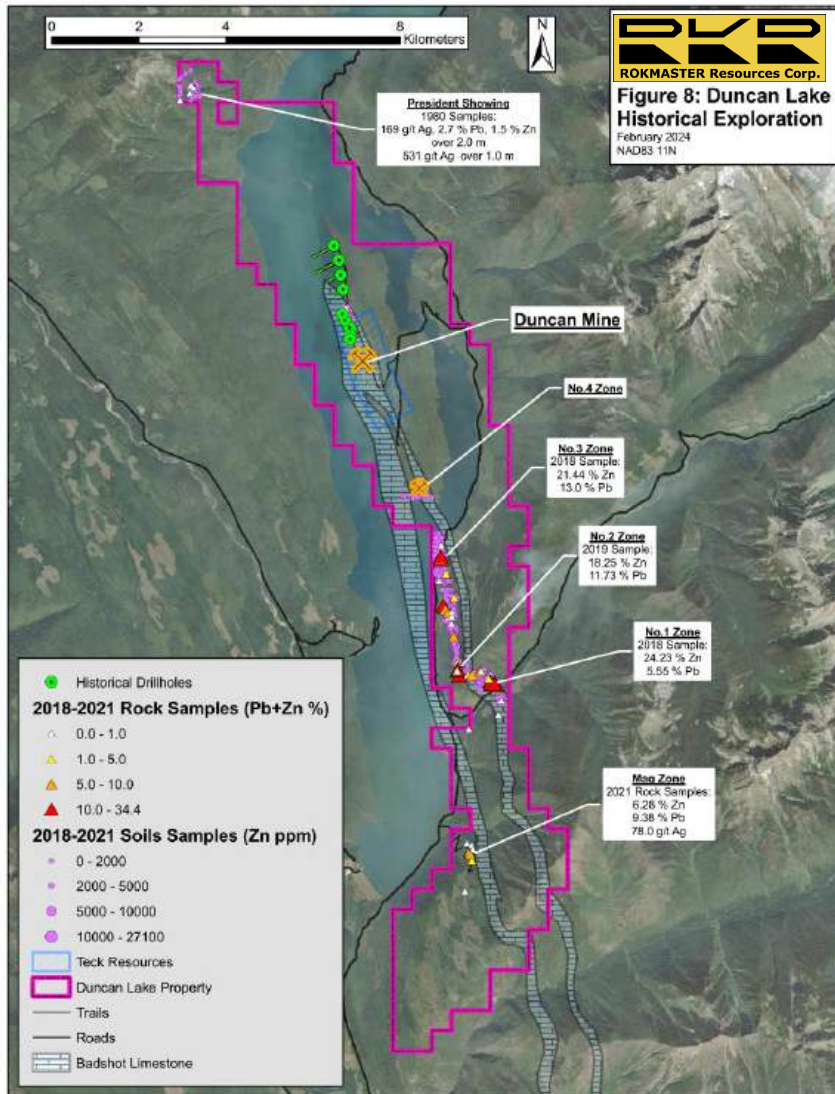
- Located in southeastern British Columbia
- Long history of exploration and development
- Road accessible
- Drill permits approved



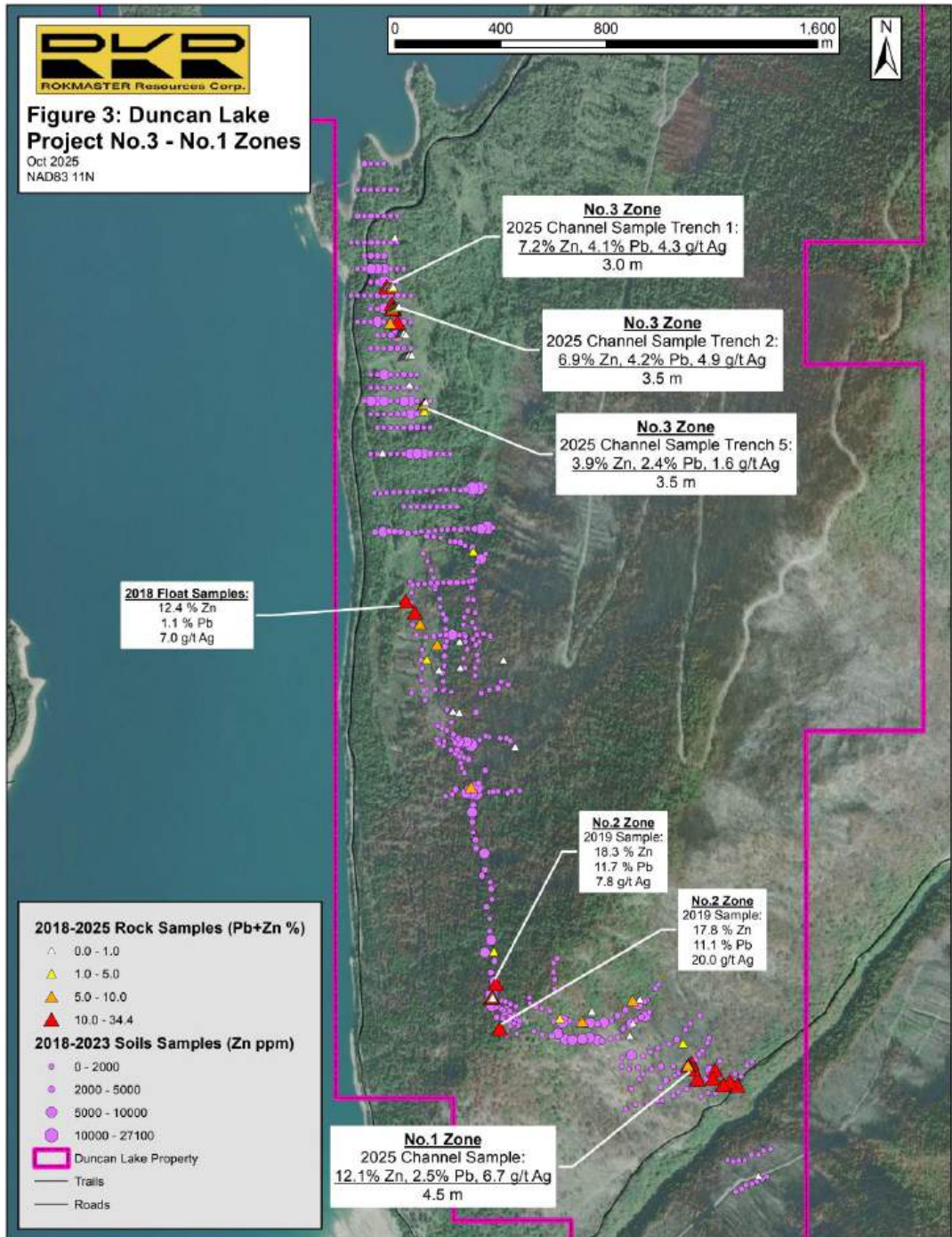
Teck Resources
Trail, BC
Pb-Zn smelter



Duncan Lake Project: > 1,700 m strike length of mineralized zones northwest of historic Duncan Mine and >10 km regional targets



Duncan Lake Project No.3 Zone

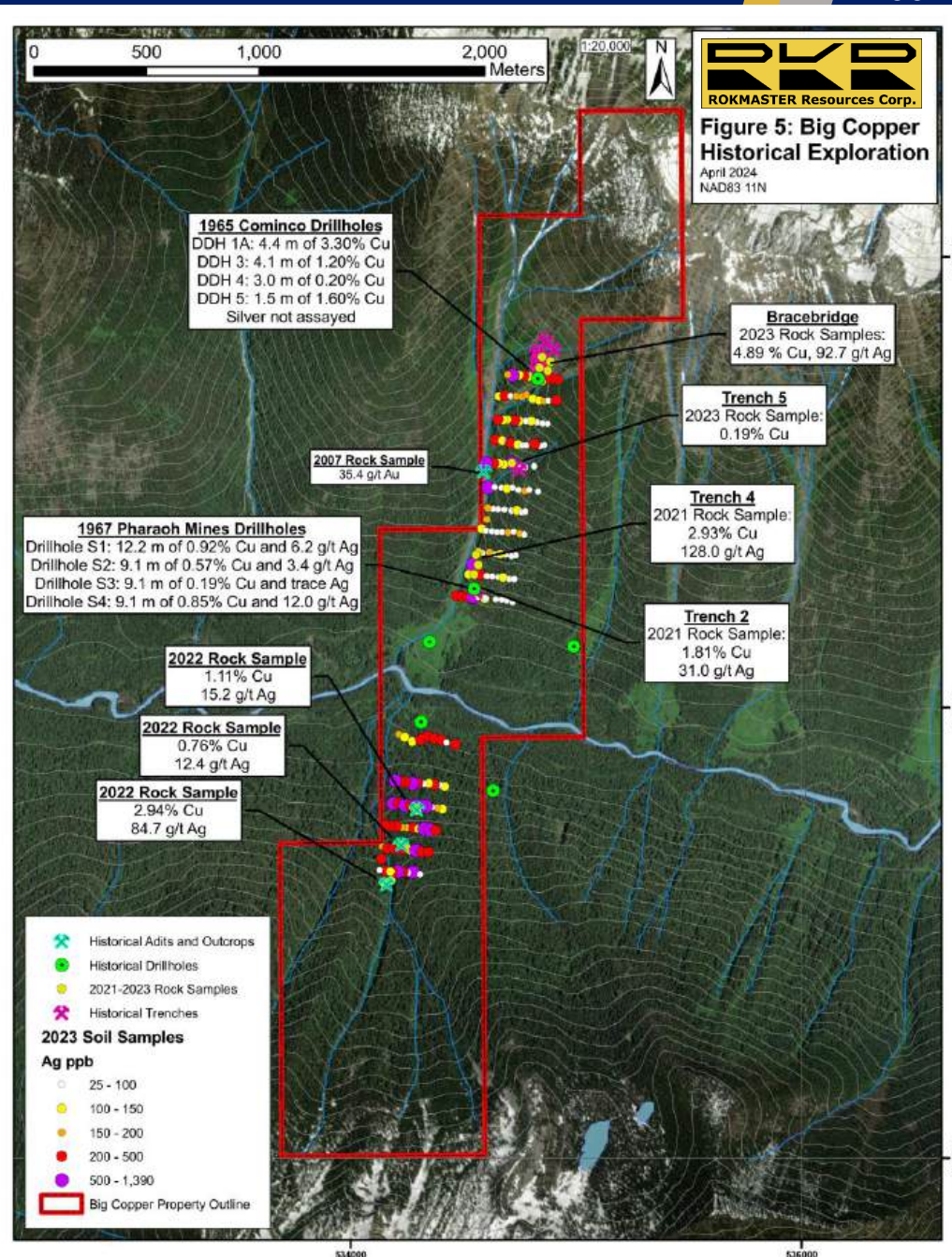


Big Copper Project

- Cu demand: price escalation
- Cu supply: exploration escalation
- 4.5 km Cu trend along deformation zone
- Approved drill permit

Cominco drilling, 1965:

- 4.4 m of 3.30% Cu, within
29.7 m of 1.4% Cu (no Ag assays)
- 4.1 m of 1.20% Cu (no Ag assays)



Big Copper Project



Selkirk Project

- Consists of the Downie Gold, Keystone and Rift Properties
- Located north of Revelstoke in the Kootenay Arc
- Short trip helicopter access to Downie Gold and Keystone Properties, road access to Rift Property
- Permits approved for drilling on Downie Gold and Keystone Properties
- Owned 100%

