



ROKMASTER RESOURCES CORP.

TSX.V: RKR OTCQB: RKMSF FSE: 1RR1

Corporate Update October 2025



Nechako Project
*Targeting high grade Au-Ag
veins and large porphyry Cu-
Au-Mo systems*



Selkirk Project
*Targeting high grade Au-Ag-
Pb-Zn mineralization*

www.rokmaster.com

Cautionary Statement

This presentation contains “forward-looking information” within the meaning of applicable Canadian securities regulations and “forward-looking statements” within the meaning of the United States Private Securities Litigation Reform Act of 1995 (collectively, “forward-looking information”). The forward-looking information contained in this presentation is made as of the date of this presentation. Except as required under applicable securities legislation, Rokmaster Resources Corp. (“RKR”) does not intend, and does not assume any obligation, to update this forward-looking information.

Forward-looking information includes, but is not limited to, statements with respect to the potential for expansion, new discoveries and future cash flows; future price of minerals and the effects thereof; the estimation of mineralization; the timing and amount of estimated capital expenditures; costs and timing of proposed activities; plans and budgets for and expected results of exploration activities; permitting time-lines; requirements for additional capital; government regulation of mining operations; environmental risks; reclamation obligations and expenses; title disputes or claims, adequacy of insurance coverage, the availability of qualified labour, acquisition plans and strategies, the payment of dividends in the future, and RKR’s use of the proceeds of an Offering. Often, but not always, forward-looking information can be identified by the use of words such as “plans”, “expects”, “is expected”, “budget”, “scheduled”, “estimates”, “forecasts”, “intends”, “anticipates”, or “believes” or the negatives thereof or variations of such words and phrases or statements that certain actions, events or results “may”, “could”, “would”, “might” or “will” be taken, occur or be achieved.

This forward-looking information is based on certain assumptions that RKR believes are reasonable, including that the current price of and demand for minerals being targeted by RKR will be sustained or will improve, the supply of minerals targeted by RKR will remain stable, that RKR’s current exploration programs and objectives can be achieved, that general business and economic conditions will not change in a material adverse manner, that financing will be available if and when needed on reasonable terms and that RKR will not experience any material accident, labour dispute, or failure of plant or equipment.

While RKR considers these assumptions to be reasonable based on information currently available to it, they may prove to be incorrect. Forward-looking information involves known and unknown risks, uncertainties and other factors which may cause the actual results, performance or achievements of RKR to be materially different from any future results, performance or achievements expressed or implied by the forward-looking information. Such factors include, among others, the risk that actual results of exploration activities will be different than anticipated, the cost of labour, equipment or materials increase more than expected, that the future price of minerals targeted by RKR will decline, that changes in project parameters as plans continue to be refined may result in increased costs, that plant, equipment or processes will fail to operate as anticipated, that accidents, labour disputes and other risks generally associated with mining may occur and that unanticipated delays in obtaining governmental approvals or financing or in the completion of development or construction activities may occur. Although RKR has attempted to identify important factors that could cause actual actions, events or results to differ materially from those described in forward-looking information, there may be other factors that cause actions, events or results not to be as anticipated, estimated or intended. There can be no assurance that forward-looking information will prove to be accurate, as actual results and future events could differ materially from those anticipated in such statements. Readers are cautioned not to place undue reliance on forward-looking information due to the inherent uncertainty thereof.

Technical Information: Eric Titley, P. Geo., a Qualified Person as defined by National Instrument 43-101 Standards of Disclosure for Mining Projects, has reviewed and approved of the technical disclosure in this presentation.

The Team

John Mirko	President, CEO & Director
Michael (“Mike”) Cowin	Chairman & Director
Adam Pankratz, MBA, MA	Director
Dennis Cojuco	CFO and Corporate Secretary
Connor Malek	VP of Exploration
Eric Titley, P.Geo	Geological Consultant
James (“Jim”) Oliver, Ph.D., P. Geo.	Geological Consultant
Craig Parry	Senior Advisor
Mark Rebagliati Ted Muraro	Geological Advisors
Harvey Tremblay	Drilling and Business Advisor
Stacy Freudigmann, P. Eng.	Metallurgical Advisor

Share Structure

Share Information:

Issued and Outstanding	180,490,478
Warrants	5,000,000
Stock Options	7,225,000

Share Ownership:

- Insiders, family & close associates ~ 34%
- DELPHI Unternehmensberatung AG ~ 14%

Trading Symbols:

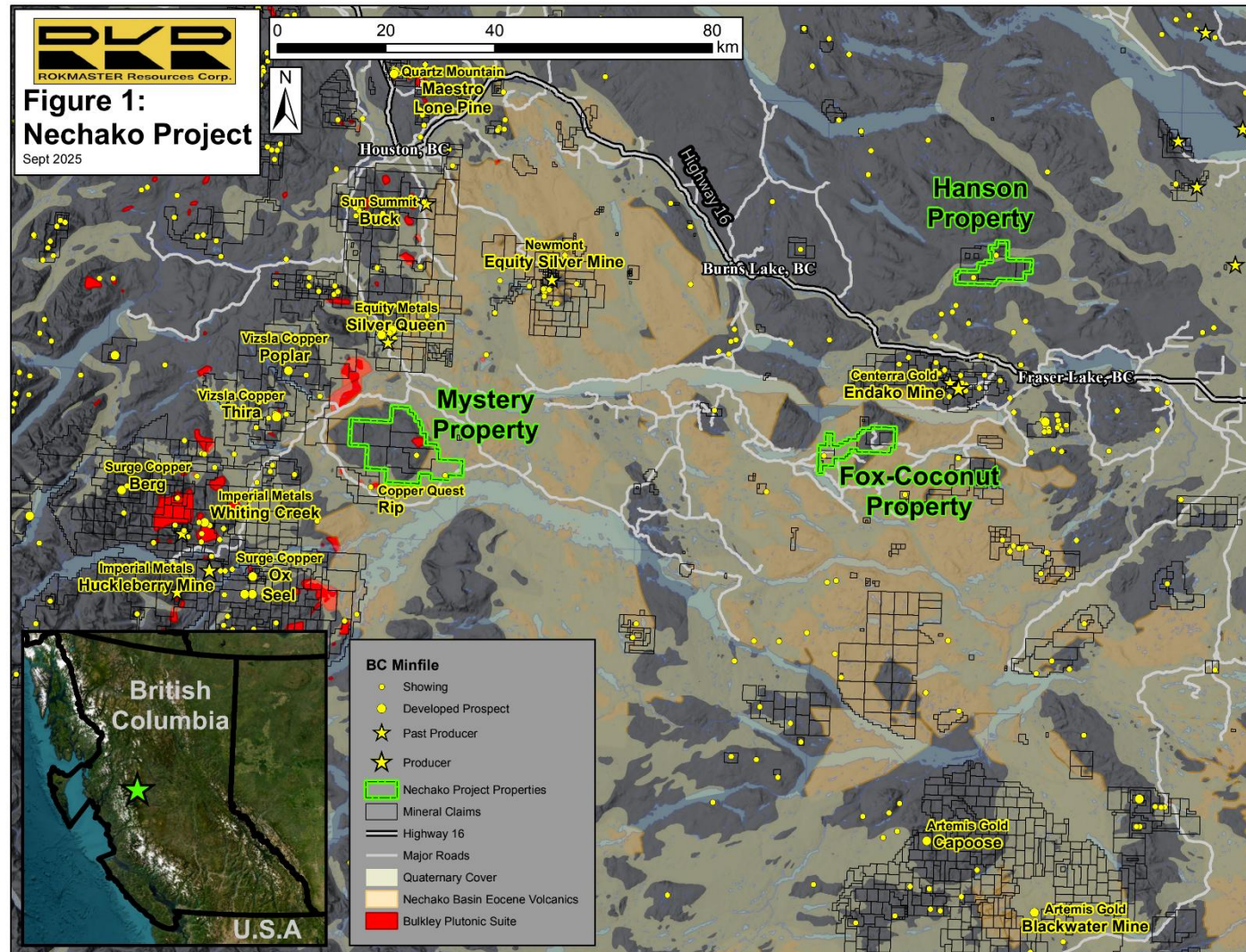
RKR (TSX.V)
RKMSF (OTCQB)
1RR1 (Frankfurt)

Contact:

Email: info@rokmaster.com
Phone: +1 (604) 290-4647

Nechako Project

- Central Nechako section of the prolific Stikine terrane
- Three road-accessible Properties
- Friendly option agreements to acquire 100%
- Permit approved for drilling and trenching on Fox-Coconut Property, and for drilling on Mystery Property



Northern Nechako Region: An excellent neighborhood

Past producing deposits include:

- Endako (Centerra Gold)
- Huckleberry (Imperial Metals)
- Equity Silver (Newmont)

Active exploration and development projects include:

- Blackwater Mine (Artemis Gold)
- Berg, Ox, and Seel deposits (Surge Copper)
- Poplar-Thira Project (Vizsla Copper)

The region hosts excellent infrastructure and exploration potential.

Endako Mo Mine

In Production for ~50 years



Aerial view of Endako Mine

2007 Thompson Creek Metals Annual Report

Huckleberry Cu-Mo-Au-Ag Mine

Produced >1.0 Blbs copper 1997-2016



Thomas, S. 2014 The Northern View

Blackwater Au-Ag Mine

In production targeting 320,000 oz Au/yr



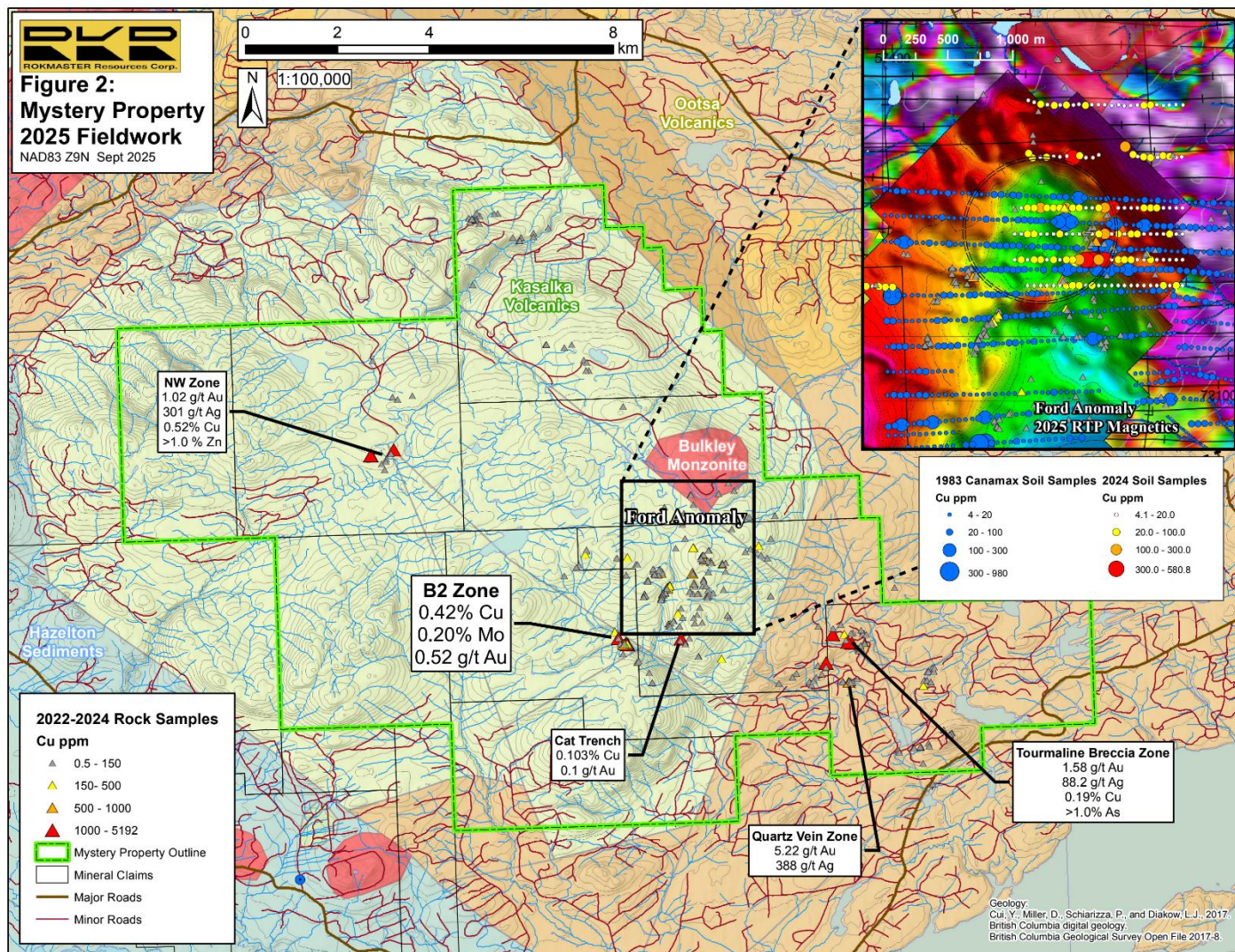
Artemis Gold April 24, 2024 news release

Mystery Property – 16,291 hectares

- Cretaceous Kasalka Group volcanic rocks intruded by a stock of porphyritic monzonite belonging to the Late Cretaceous Bulkley Plutonic Suite. The Bulkley Plutonic Suite hosts porphyry Cu-Mo mineralization at the nearby Huckleberry, Ox, and Seel deposits.

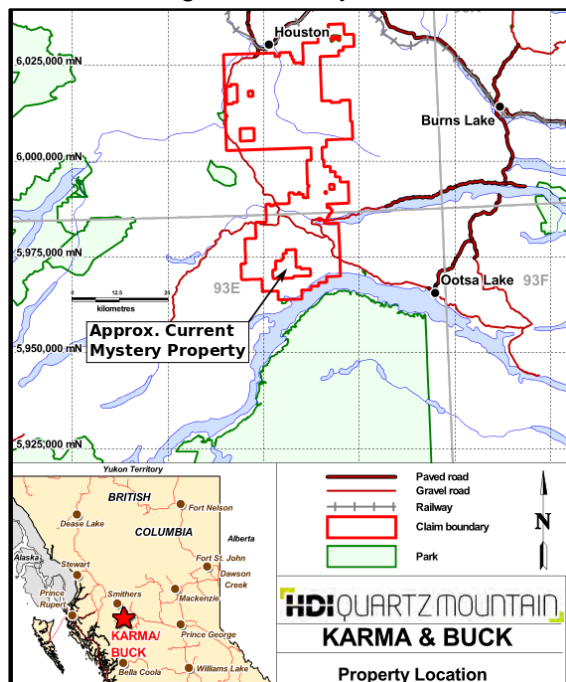
- Historic soil geochemical anomalies for copper, lead, zinc, silver associated with a coincident magnetic high.

- B2 Zone hosts potassic-altered andesite with extensive pyrite-chalcopyrite veining over ~200 m. Assay results pending.



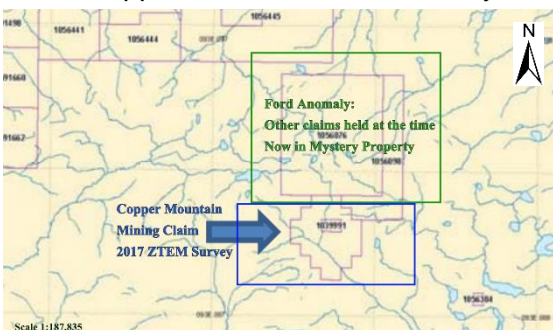
Mystery Property – Now consolidated

2012 HDI magnetic survey



ARIS #33883

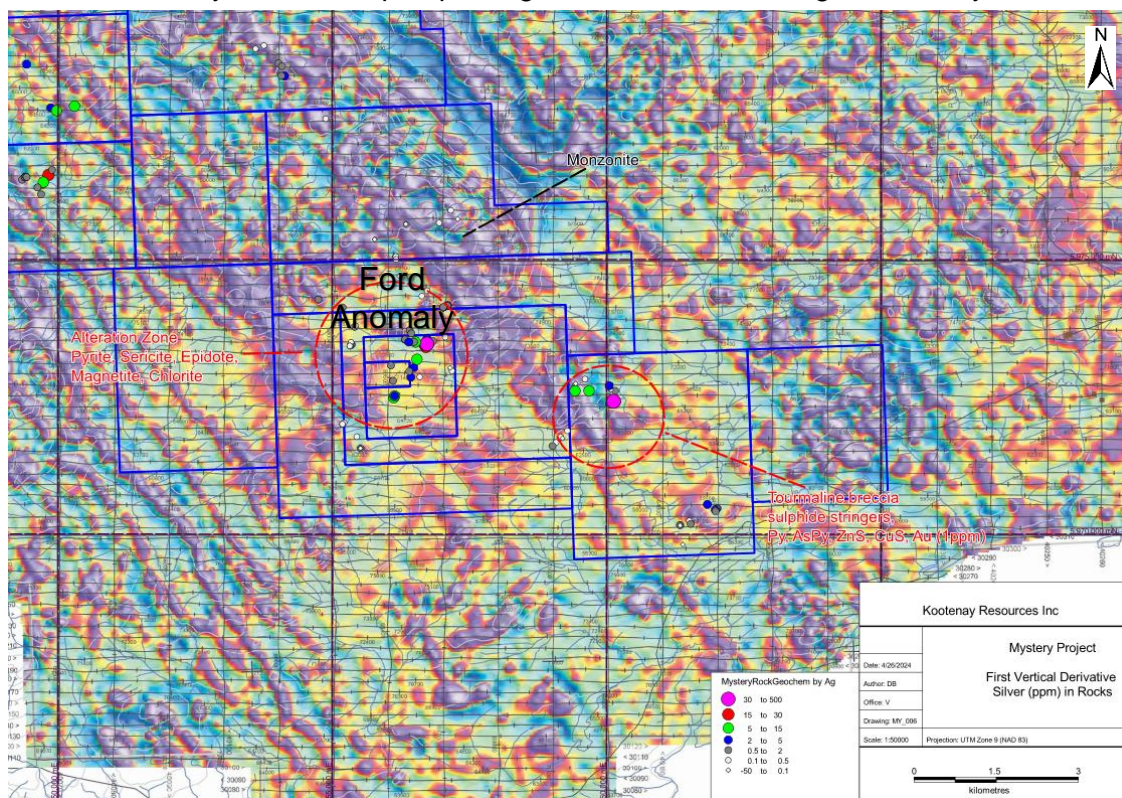
2017 Copper Mountain ZTEM Survey



ARIS #37101

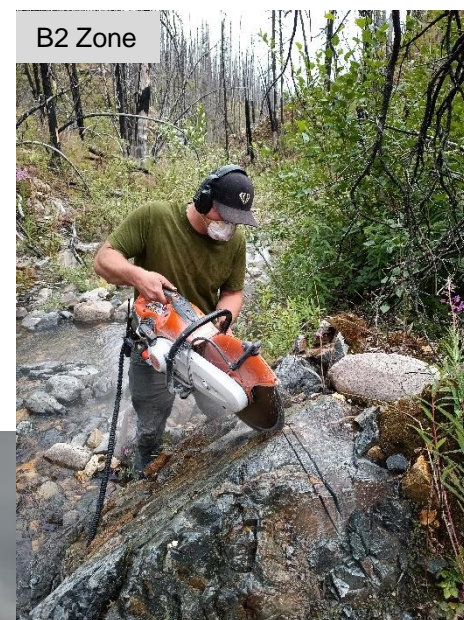
Previous operators did not hold a set of key claims over the Ford Anomaly which is now in the center of the Mystery Property

2022 Kootenay Resources prospecting results over 2012 magnetic survey



Mystery Property – 2024-2025 Exploration

The Mystery Property was nearly entirely burned in a 2018 forest fire which now provides great exposure and new access with salvage logging operations.

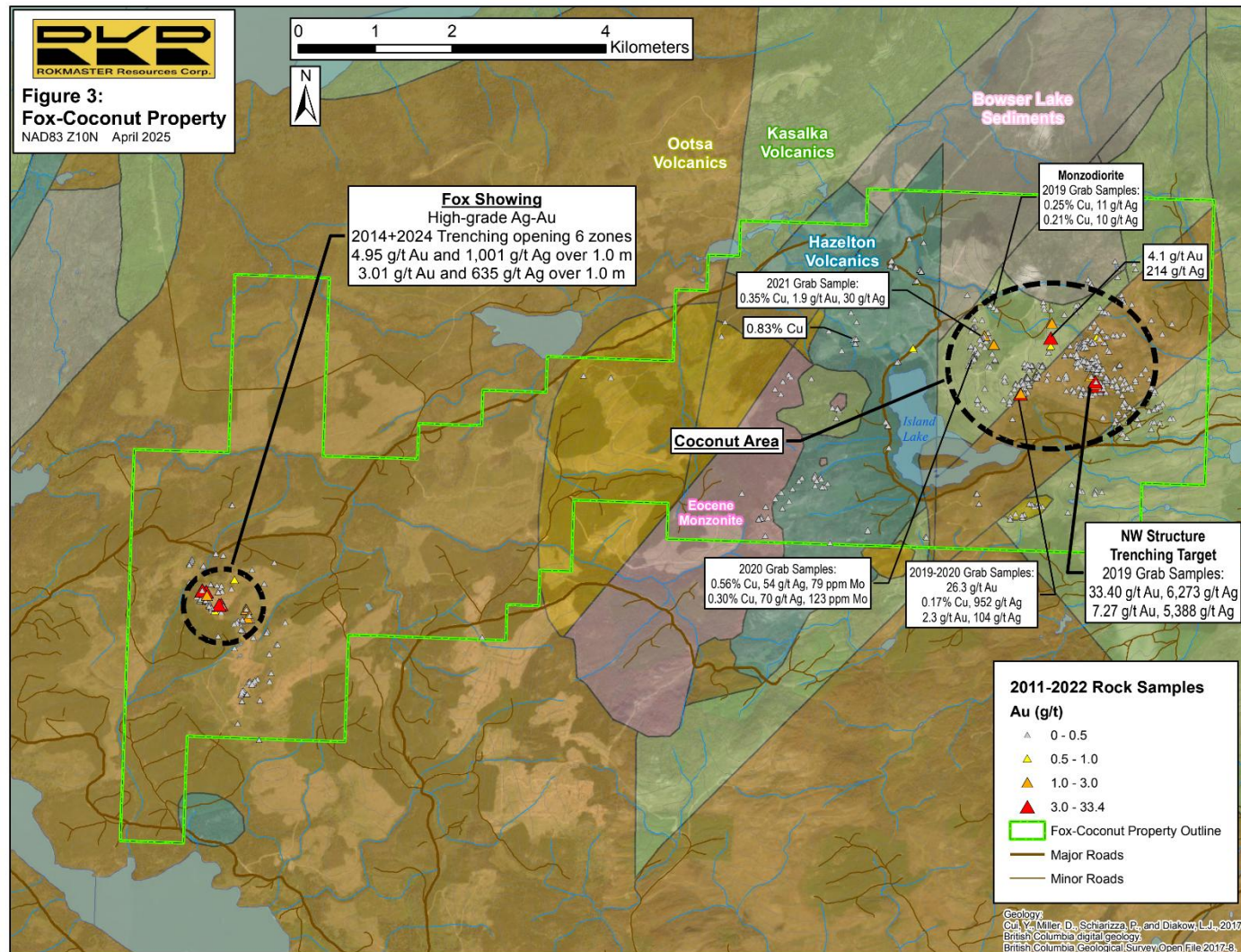


Fox-Coconut Property – 5,463 hectares

•Fox Showing:

Silicified rhyolite volcanics hosting quartz veins and breccias.

•**Coconut Area:** Broad zone of propylitic alteration which hosts several structurally controlled vein/dyke corridors with high-grade gold and silver and coincident base metals.

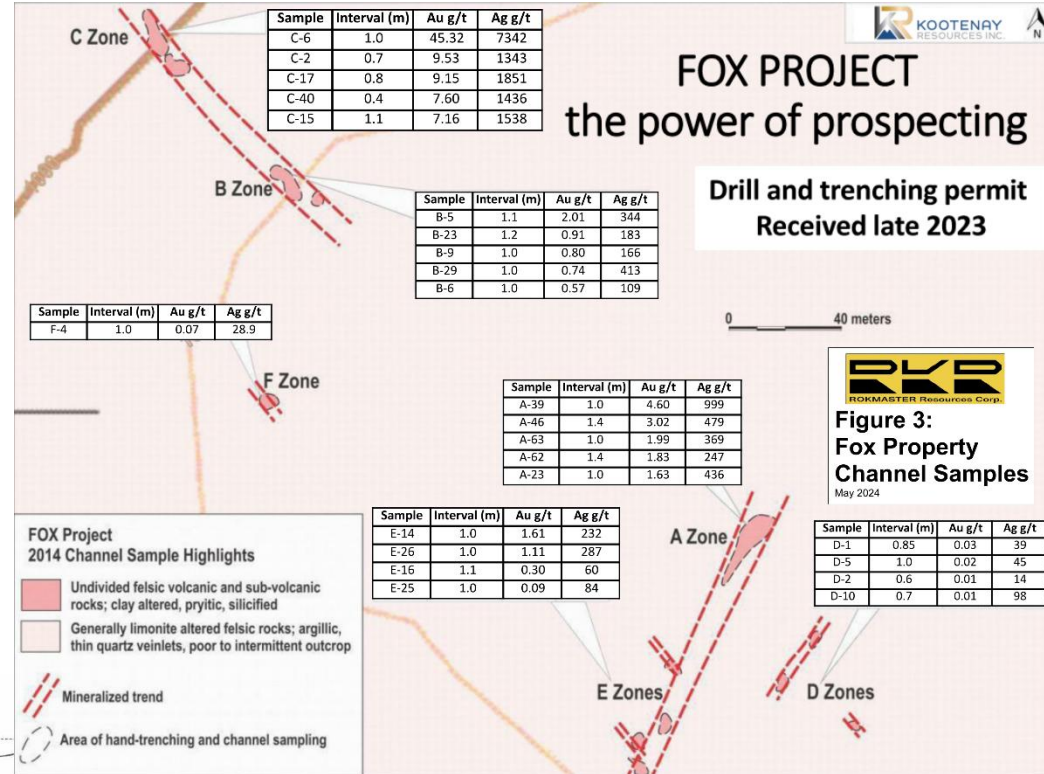
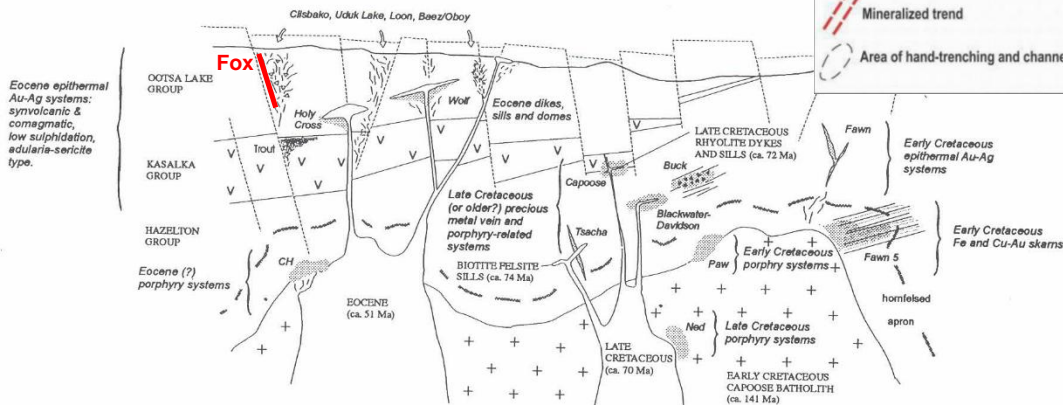


Fox Showing

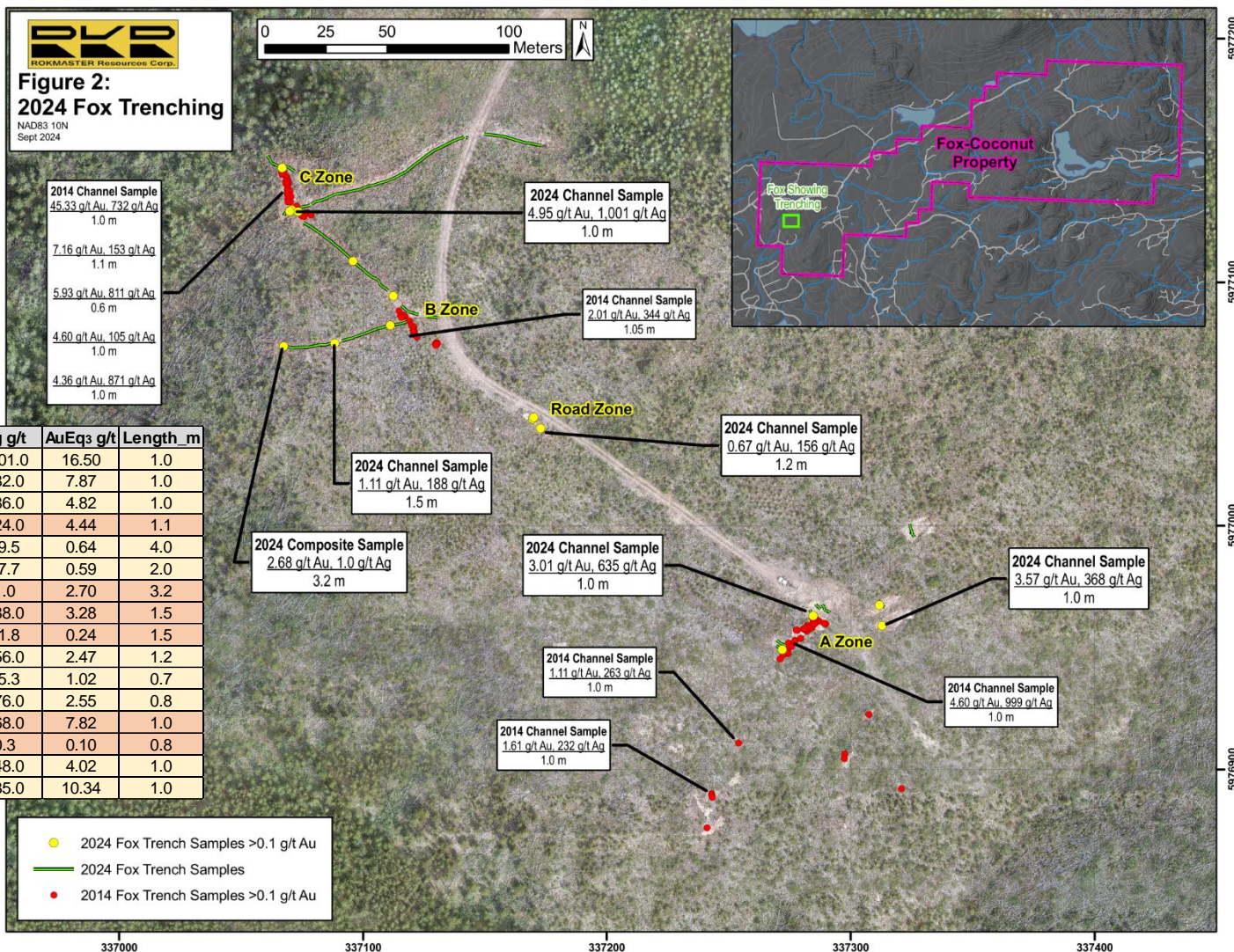
2014 hand trenching and channel sampling



C Zone

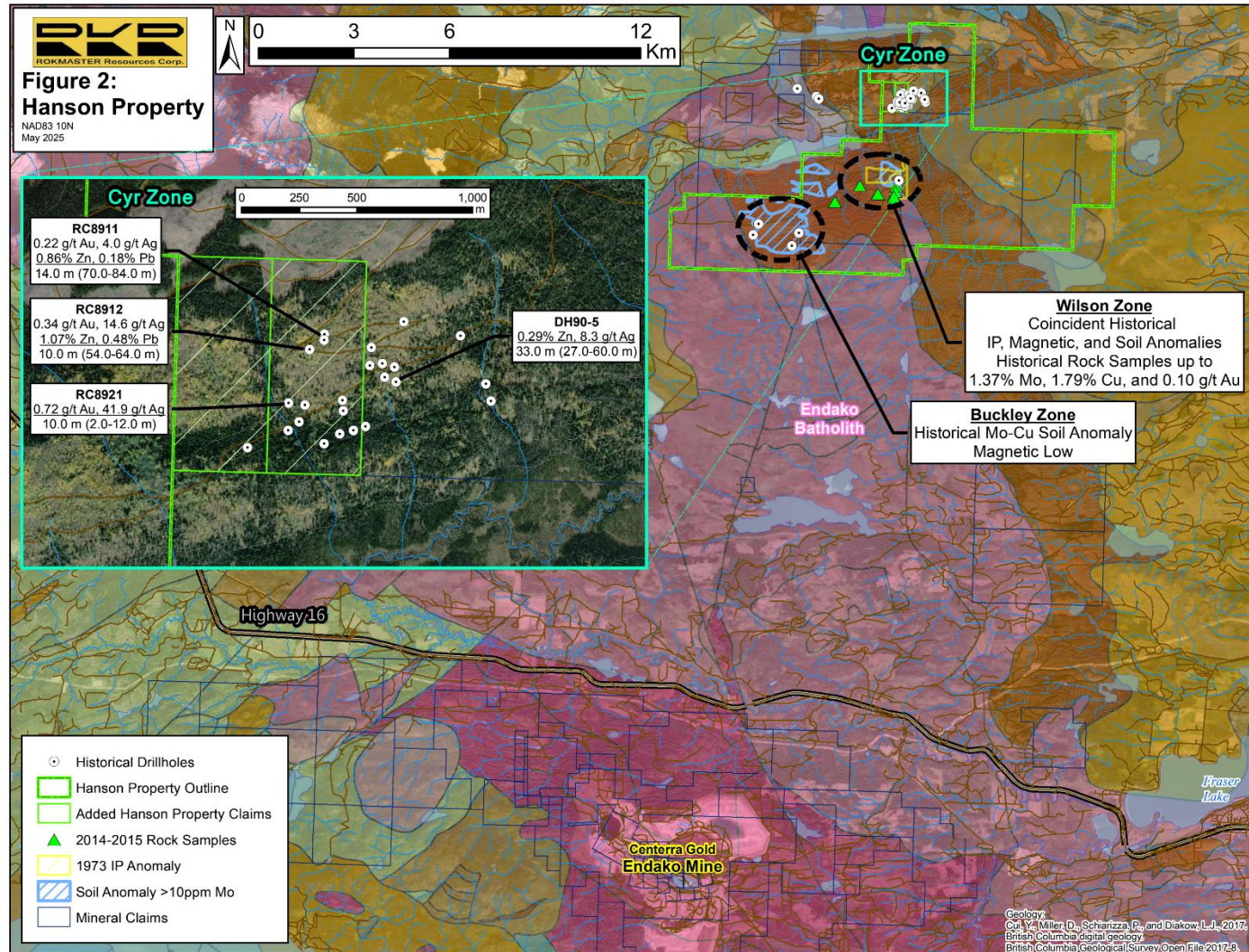


Discovery Vein (C Zone): Average value of 6.5 g/t Au and 1,194 g/t Ag from 17 channel samples over average width of 0.9 meters



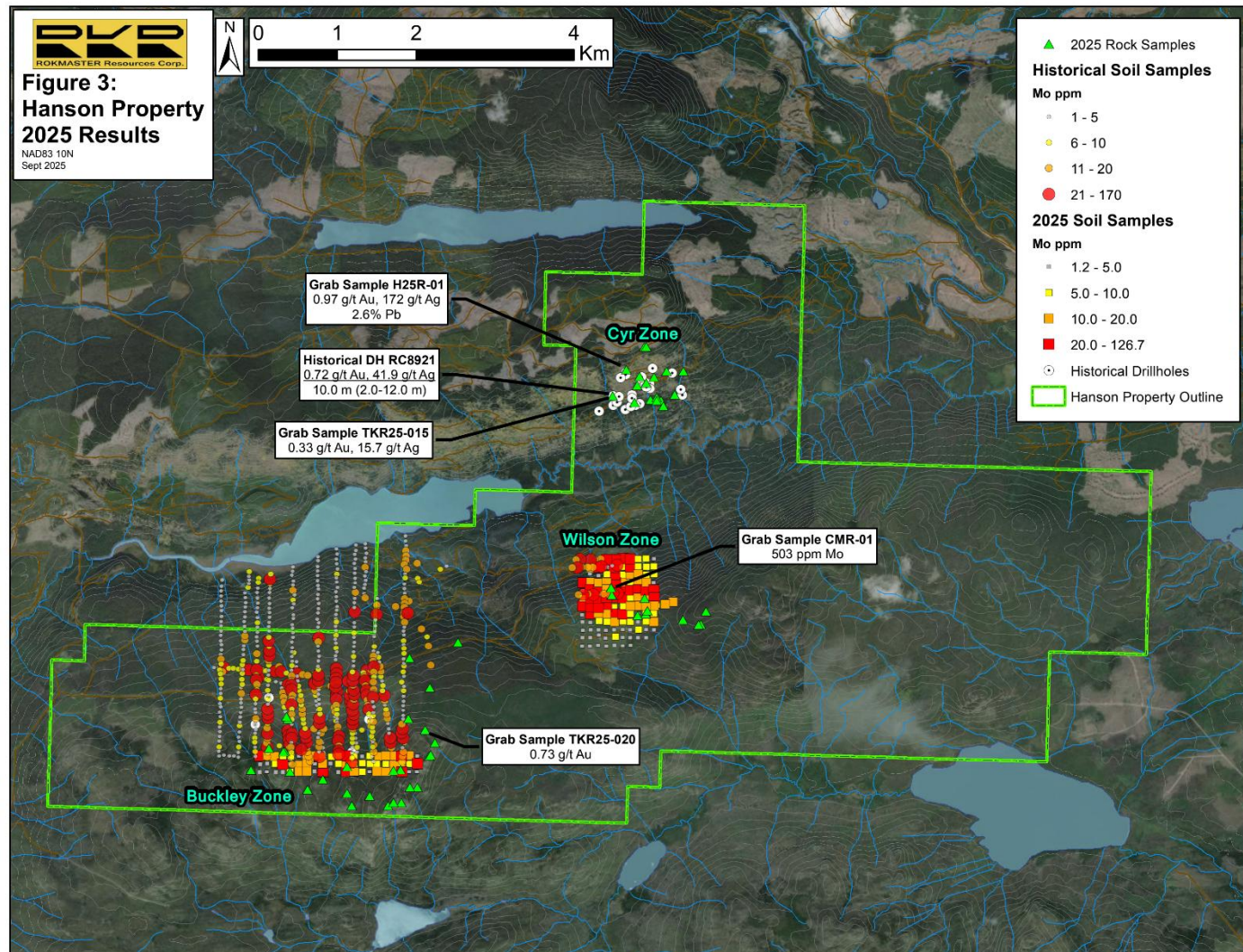
Hanson Property – 5,349 hectares

- Road accessible 20 km north of the past producing Endako Mo Mine.
- Strong soil Mo-Cu anomalies generated at Buckley and Wilson Zones in 1973 yet to be thoroughly investigated. These zones are in and on the margin of the northern Hanson phase of the Endako Batholith with several similar features to the Endako Mine area.
- Cyr Zone hosts several shallow historical drillholes which intersected broad intervals of Au-Ag-Zn-Pb-Cu mineralization in a quartz porphyry unit with strong clay alteration and disseminated pyrite.
- Area extensively burned in 2018 Shovel Lake fire.

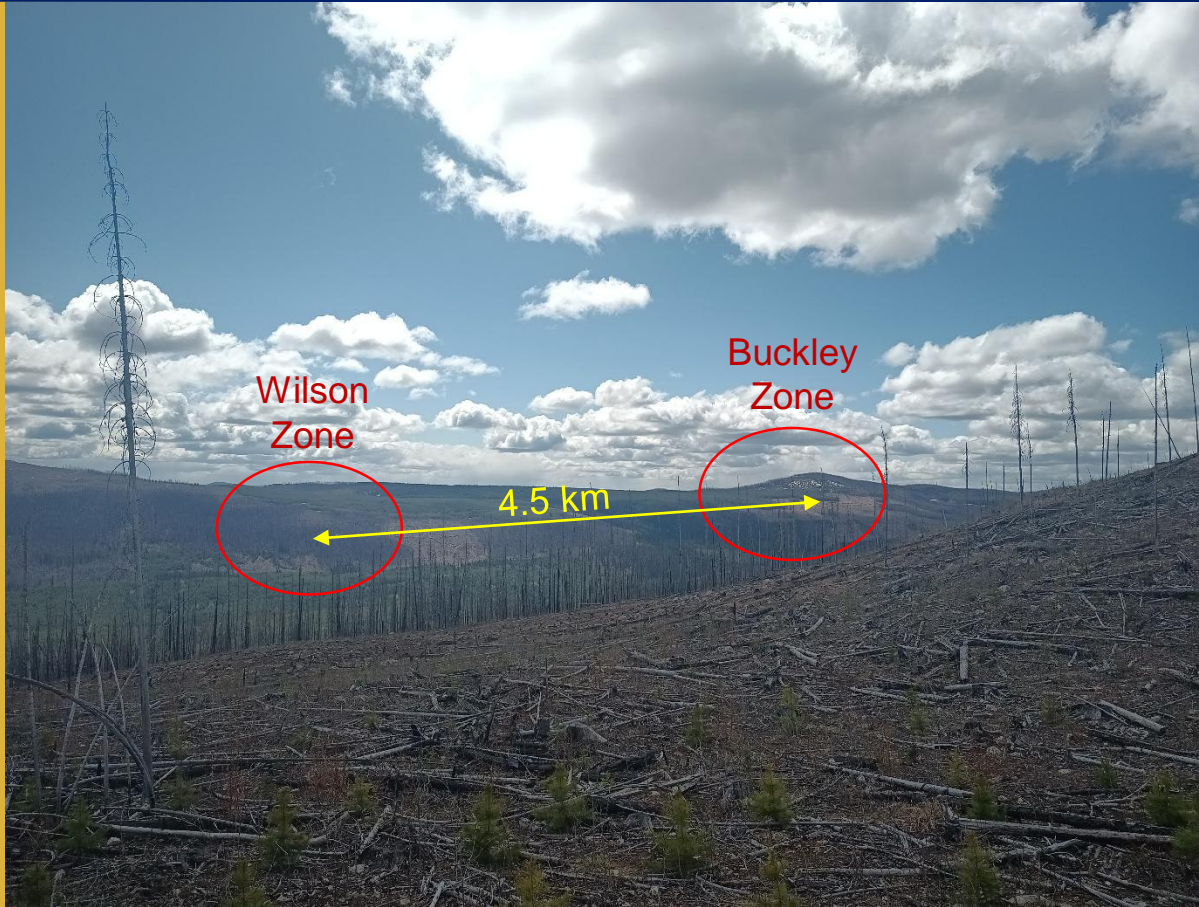


Hanson Property – 2025 Field Work

- Field work in 2025 extended the large soil anomalies at the Buckley and Wilson zones
- Identification of potassic (biotite) alteration directly related to the molybdenite mineralization at the Wilson Zone.
- An exploration drill permit has been applied for and the company anticipates approval soon.



Hanson Property – 2025 Photos



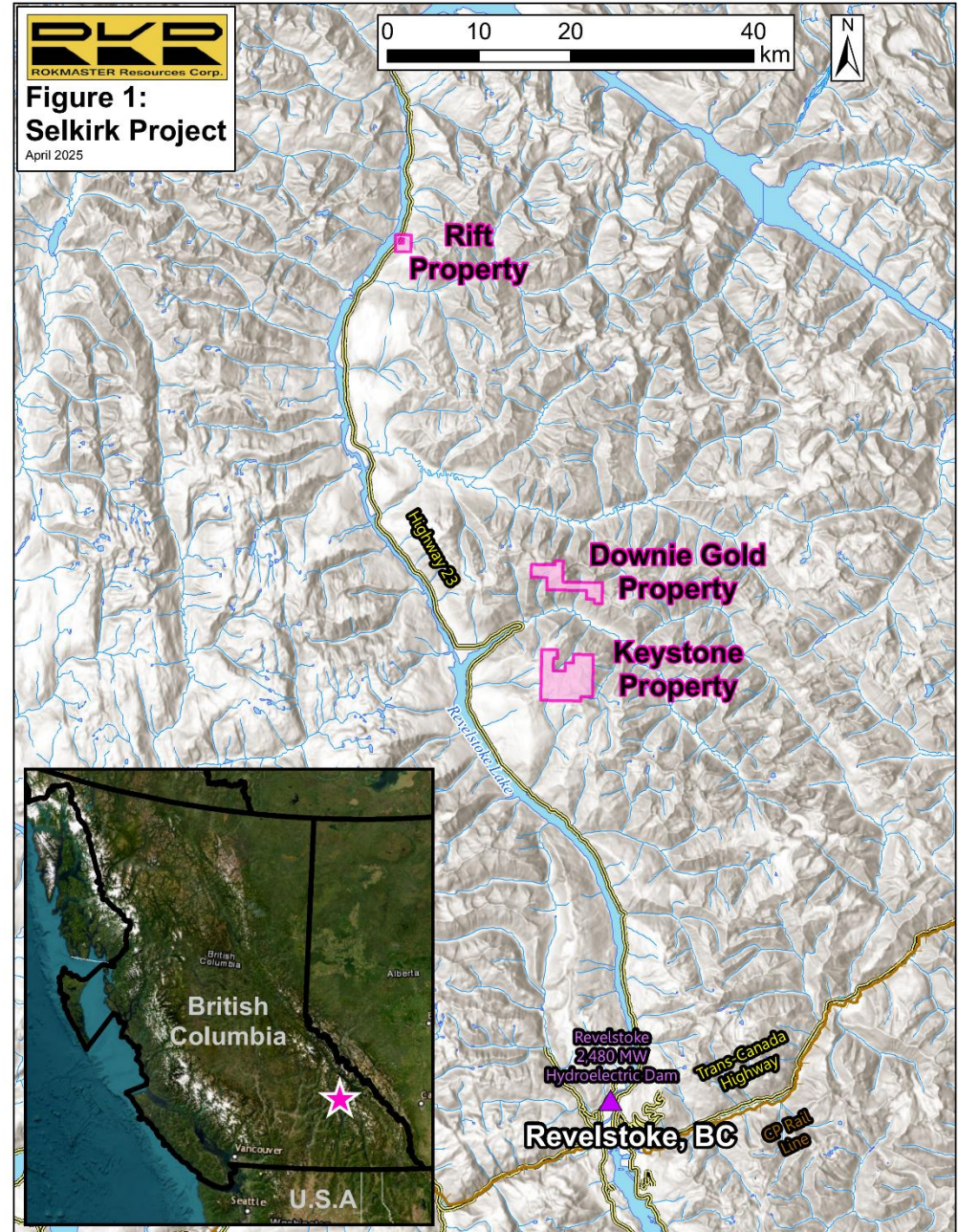
Looking South from Cyr Zone



Looking North from Wilson Zone

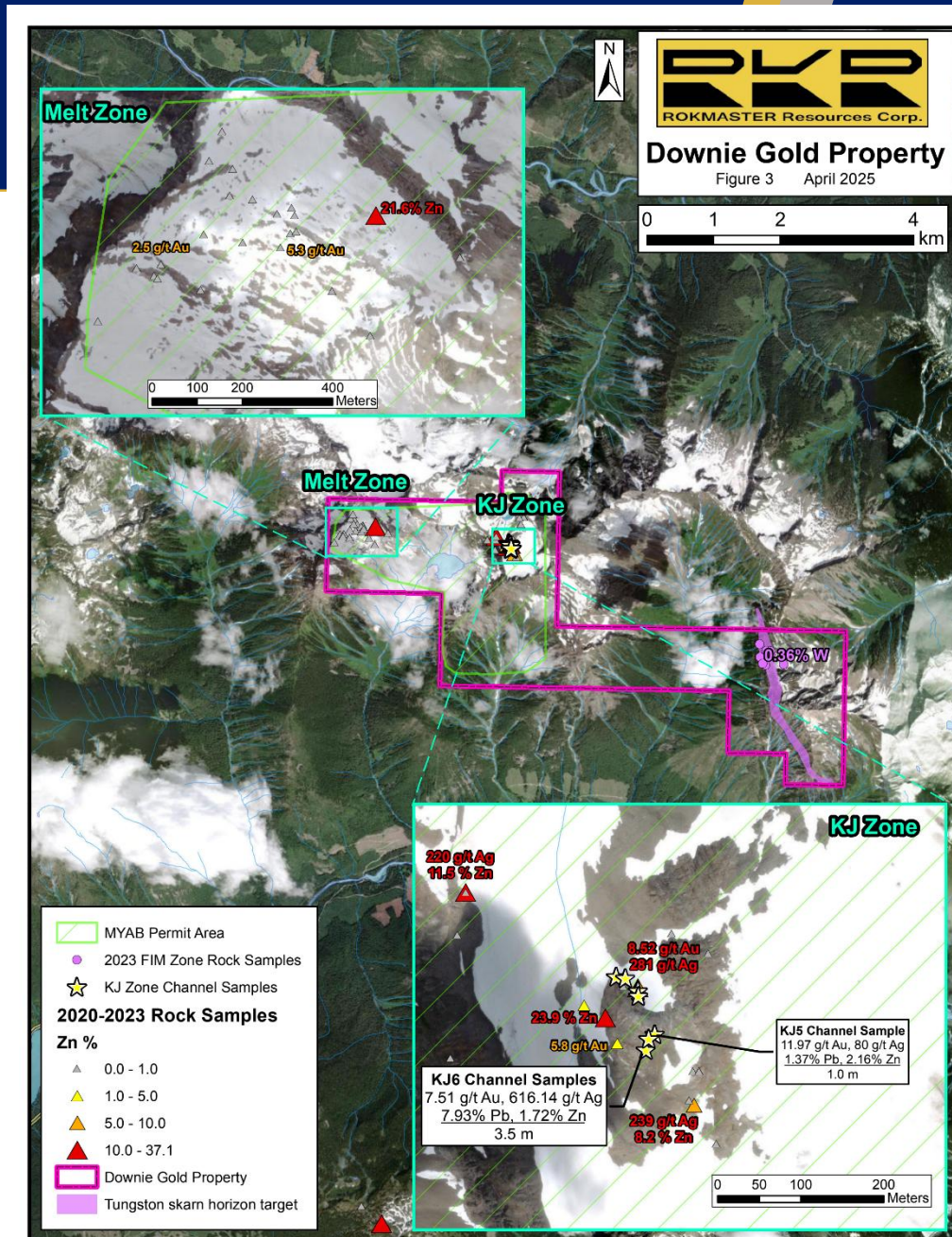
Selkirk Project

- Consists of the Downie Gold, Keystone and Rift Properties
- Located north of Revelstoke in the Kootenay Arc
- Close helicopter access to Downie Gold and Keystone Properties, road access to Rift Property
- Permits approved for drilling on Downie Gold and Keystone Properties
- Owned 100%



Downie Gold Property – 1,367 hectares

- Index and Akolkolex Formation rocks situated between the Goldstream Pluton and Long Creek Stock.
- **KJ Zone:** Elevated gold in massive pyrrhotite-pyrite-galena mineralization associated with discordant stockwork veins and silicification in limestone rocks. Channel sample KJ6 returned **7.51 g/t Au, 616.14 g/t Ag, 7.93% Pb, and 1.72 % Zn over 3.50 meters.**
- **Melt Zone:** Skarn-style massive pyrrhotite and sphalerite mineralization hosting locally elevated gold.
- **FIM Zone:** 3.0 km long historically mapped garnet-diopside skarn horizon hosting tungsten mineralization.
- Permitted for drilling.



Downie Gold Property

Jack Denny at KJ Zone



Western KJ Zone



Melt Zone



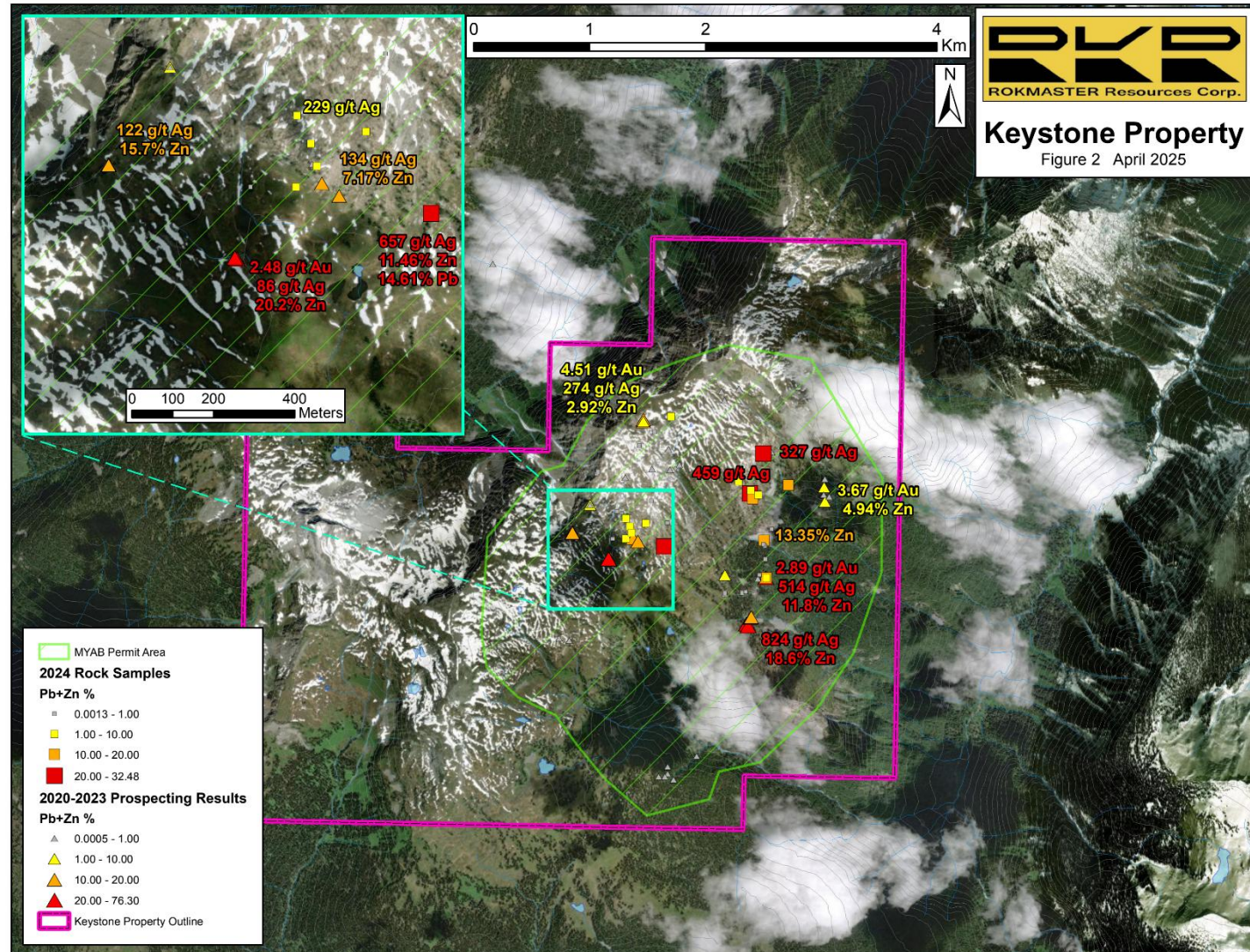
Keystone Property – 5,276 hectares

- Early Paleozoic sedimentary and volcanic rocks of the Index Formation hosting Replacement and vein-hosted sphalerite and galena mineralization.

- The northern extension of the mapped Akolkolex Thrust fault occurs within and proximal to the property, providing potential for orogenic-style gold mineralization

- Historical trenching in the north of the Property exposes arsenopyrite mineralization grading 4.51 g/t Au, 274 g/t Ag, and 2.92% Zn in a grab sample.

- Permitted for drilling.



Keystone Property

Keystone Basin from the north



Historical Adit in the east area of the Keystone Property

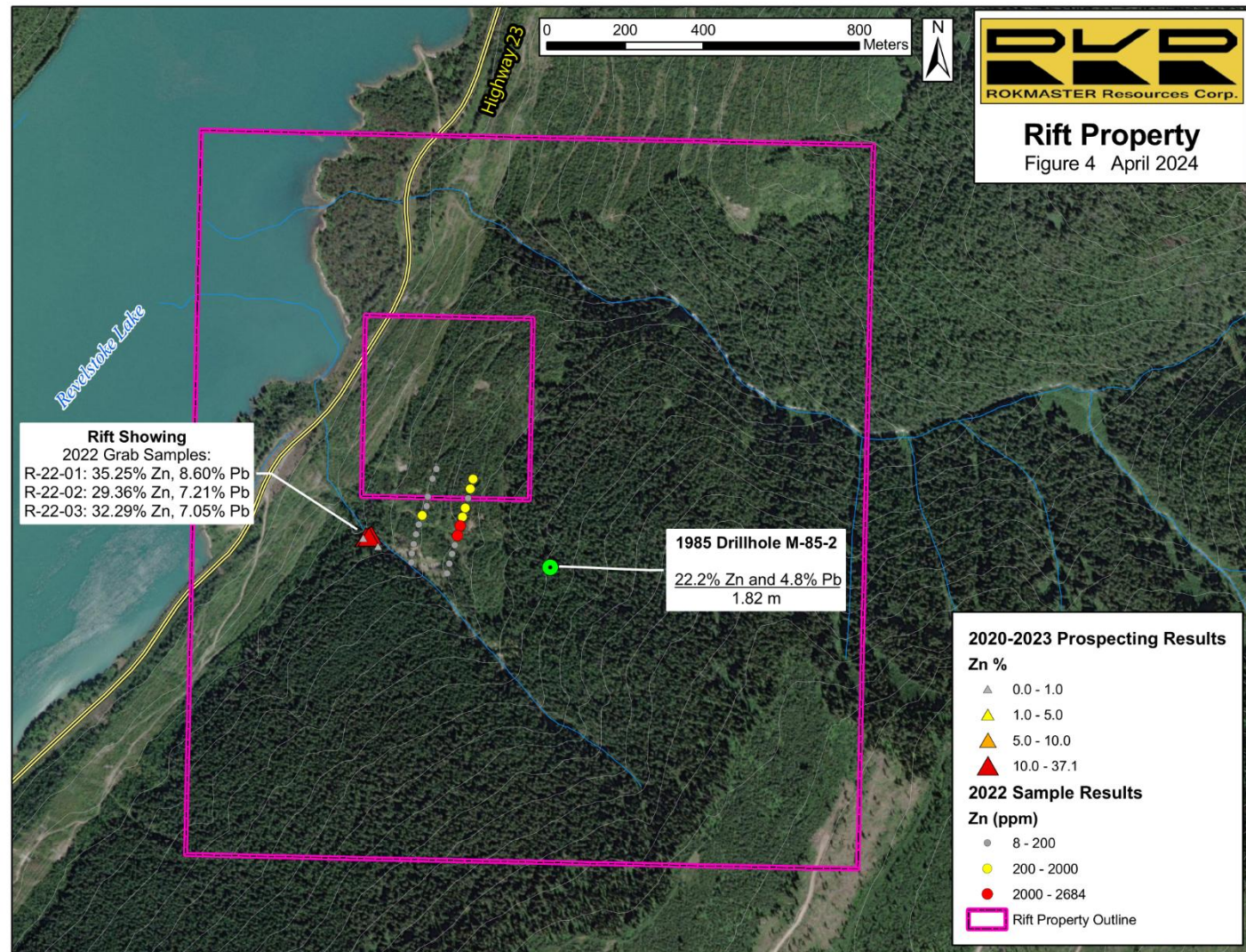


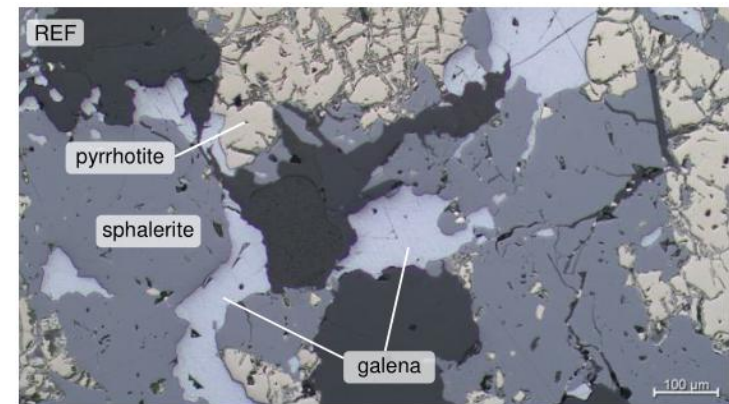
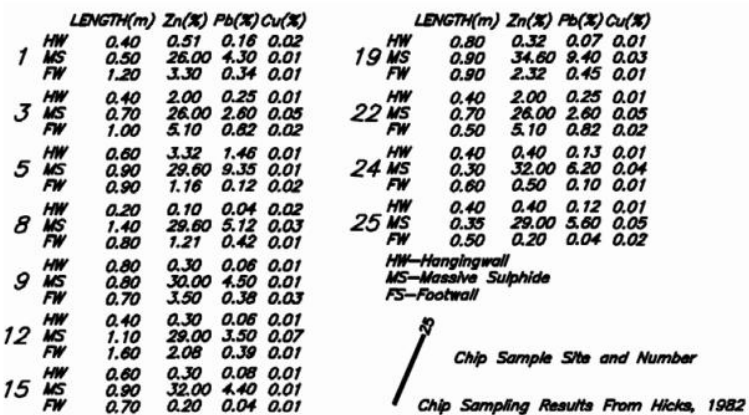
Arsenopyrite Historical Trench



Rift Property – 299 hectares

- Grab samples from main Rift Showing assayed up to 35.25% Zn, 8.60% Pb from a stratiform massive sphalerite-galena horizon in pelitic schist.
- Drillhole M-85-2 was completed in 1985 approximately 460 m east of the Rift Showing and encountered 22.21% Zn and 4.82% Pb over 1.82 m.





Photomicrograph RIFT-TS-01_05

Exploration Objectives – 2025

- Vector toward robust drill targets on the Nechako Project with efficient field programs.
- Permit the Hanson Property to have drill permits on all Properties.
- Possible drilling in 2025/2026 on the Nechako Project.
- Continue exploration on the Selkirk Project.